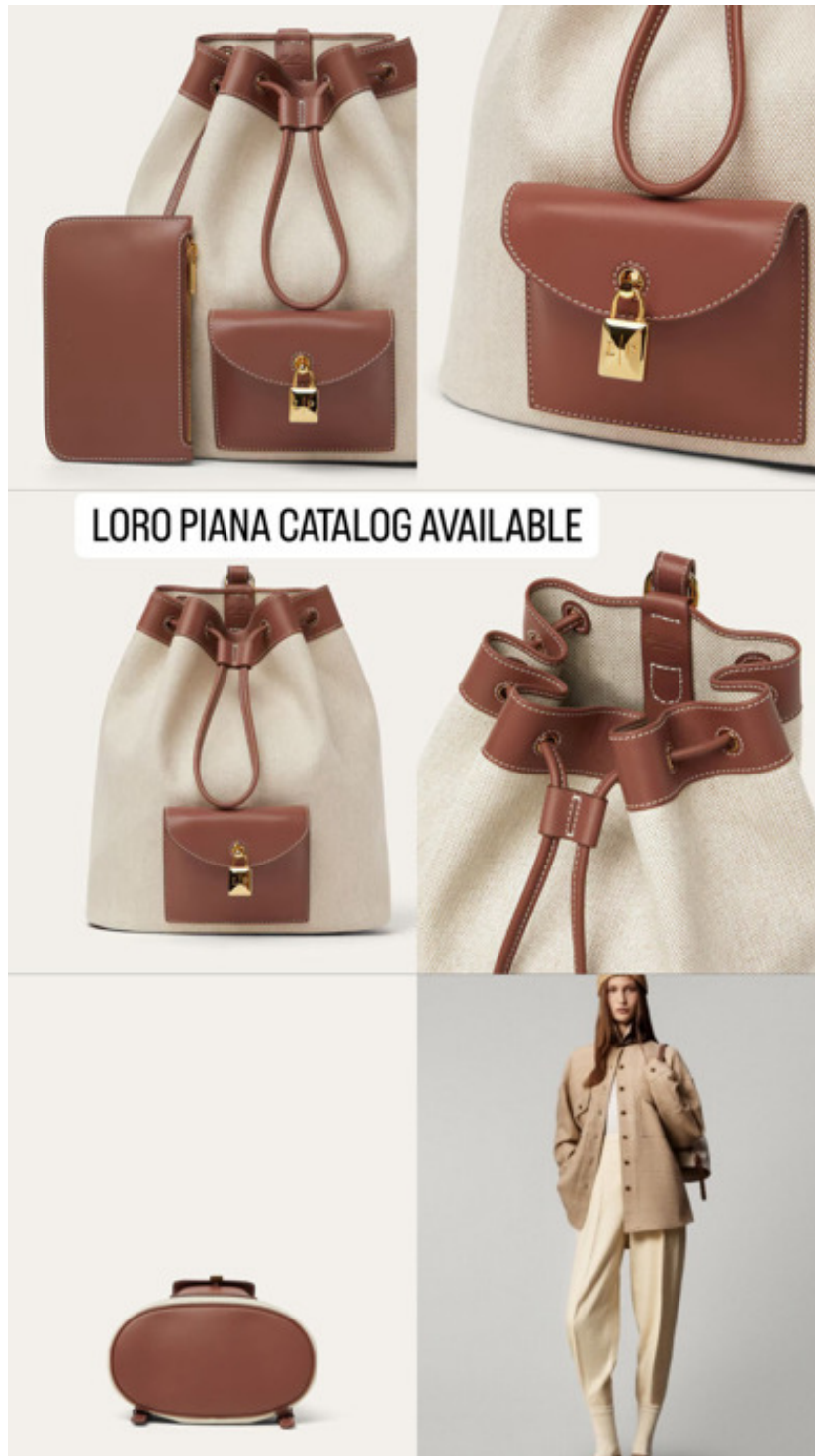


# Table of Contents

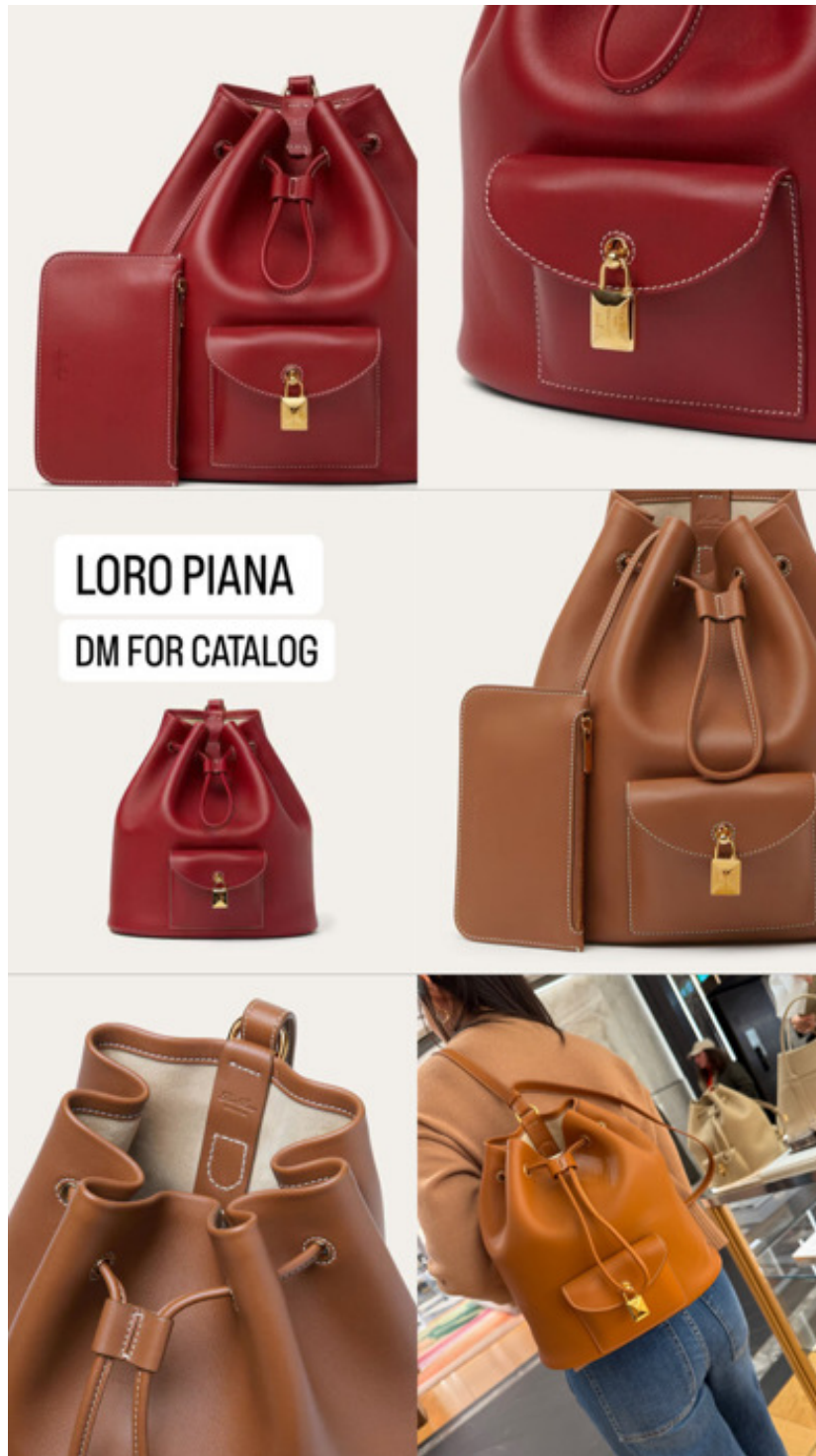
Product	Code	Page
Extra Drawstring backpack L27 Cotton, Linen	55194	2
Extra Drawstring backpack L27 Calfskin	55195	3
Extra Drawstring backpack L27 Calfskin	55196	4
Extra Drawstring backpack L27 Calfskin	55197	5
Extra Pochette Calfskin	55198	6
Extra Pochette Calfskin	55199	7
Extra Pocket Mini Pouch Grained Calfskin	55200	8
Extra Pocket Mini Pouch Grained Calfskin	55201	9
Extra Pocket Mini Pouch Grained Calfskin	55202	10
Ghiera Shopper Large Calfskin	55203	11
Ghiera Shopper Large Calfskin	55204	12
Ghiera Shopper Large Calfskin	55205	13
Ghiera Shopper Large Calfskin	55206	14
Ghiera Shopper Large Calfskin	55207	15



LORO PIANA CATALOG AVAILABLE

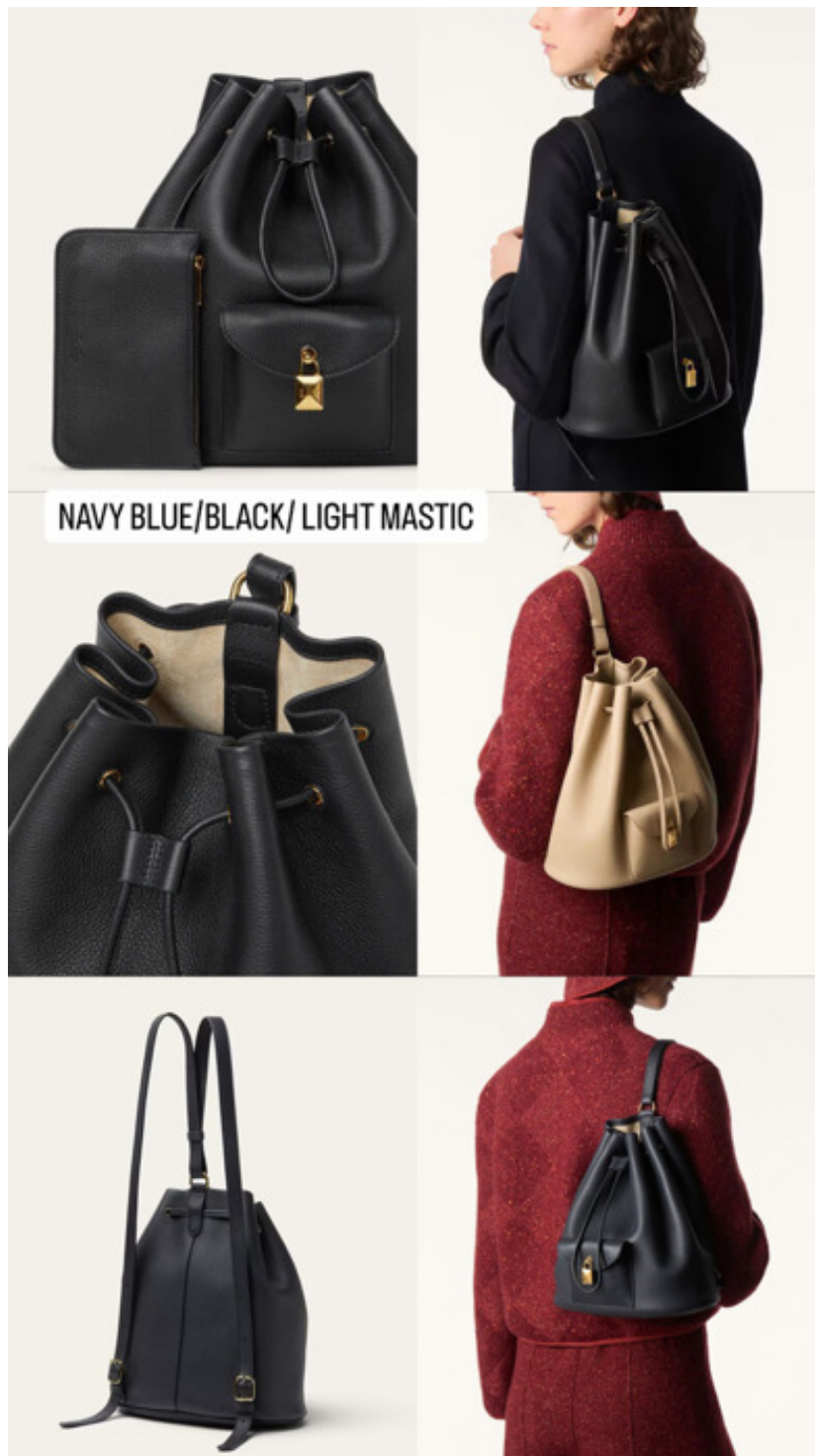
Adjustable shoulder straps with metal tips that can be connected to a leather loop to adjust the fit  
Removable internal zip pouch with heat embossed logo  
Drawstring fastening with metal eyelets  
Leather trim with tonal stitching  
Leather front pocket with magnetic closure and iconic Loro Piana logo padlock  
Hardware in Sun Gold finishing  
Leather base  
Dimensions: 25 x 27 x 14 cm / 9.8 x 10.6 x 5.5 in  
Composition: 100% Calfskin  
Lining: 100% Suede  
Made in Italy

Extra Drawstring backpack L27 Cotton, Linen  
210,000



Adjustable shoulder straps with metal tips that can be connected to a leather loop to adjust the fit  
Removable internal zip pouch with heat embossed logo  
Drawstring fastening with metal eyelets  
Leather trim with tonal stitching  
Leather front pocket with magnetic closure and iconic Loro Piana logo padlock  
Hardware in Sun Gold finishing  
Leather base  
Dimensions: 25 x 27 x 14 cm / 9.8 x 10.6 x 5.5 in  
Composition: 100% Calfskin  
Lining: 100% Suede  
Made in Italy

Extra Drawstring backpack L27 Calfskin  
229,000



NAVY BLUE/BLACK/ LIGHT MASTIC

Adjustable shoulder straps with metal tips that can be connected to a leather loop to adjust the fit  
Removable internal zip pouch with heat embossed logo  
Drawstring fastening with metal eyelets  
Leather trim with tonal stitching  
Leather front pocket with magnetic closure and iconic Loro Piana logo padlock  
Hardware in Sun Gold finishing  
Leather base  
Dimensions: 25 x 27 x 14 cm / 9.8 x 10.6 x 5.5 in  
Composition: 100% Calfskin  
Lining: 100% Suede  
Made in Italy

Extra Drawstring backpack L27 Calfskin  
229,000





Adjustable shoulder straps with metal tips that can be connected to a leather loop to adjust the fit  
Removable internal zip pouch with heat embossed logo  
Drawstring fastening with metal eyelets  
Leather trim with tonal stitching  
Leather front pocket with magnetic closure and iconic Loro Piana logo padlock  
Hardware in Sun Gold finishing  
Leather base  
Dimensions: 25 x 27 x 14 cm / 9.8 x 10.6 x 5.5 in  
Composition: 100% Calfskin  
Lining: 100% Suede  
Made in Italy

Extra Drawstring backpack L27 Calfskin  
229,000



Adjustable and detachable shoulder strap

Flap and magnetic closure with iconic Loro Piana logo padlock

External back pocket

Sun Gold hardware

Dimensions: 18 x 10 x 2.5 cm / 7.1 x 3.9 x 1 in

Strap drop: 48 cm / 18.9 in

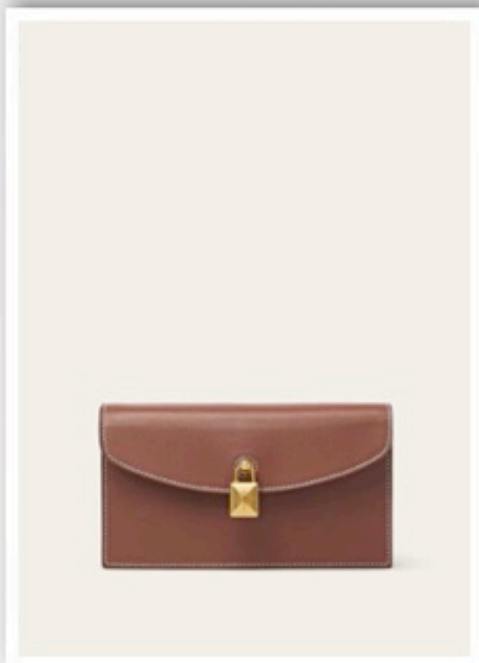
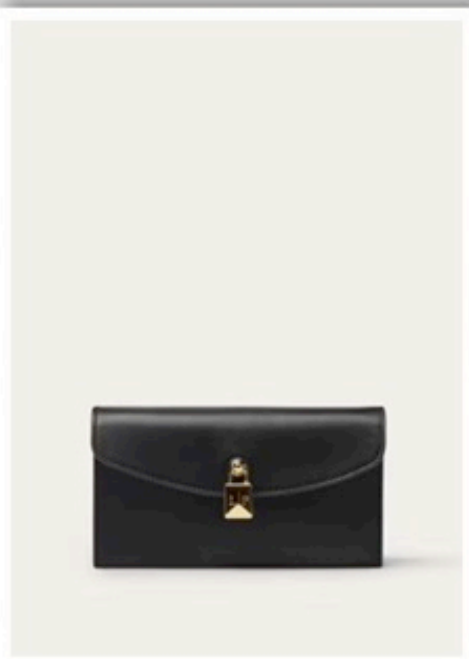
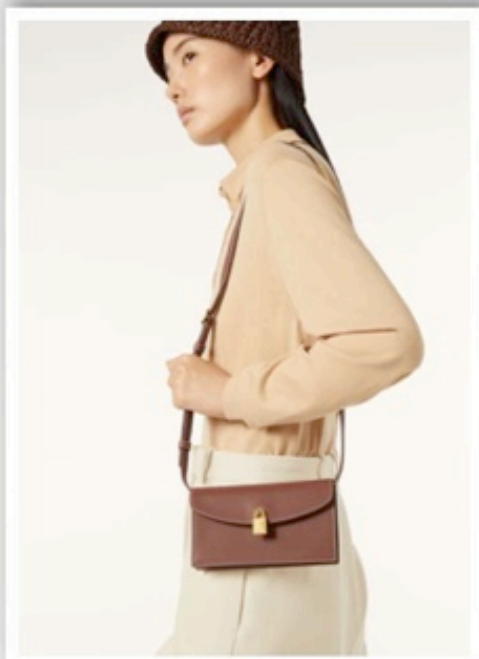
Composition: 100% Calfskin

Lining: 100% Lambskin

Made in Italy

Extra Pochette Calfskin

115,000



Adjustable and detachable shoulder strap

Flap and magnetic closure with iconic Loro Piana logo padlock

External back pocket

Sun Gold hardware

Dimensions: 18 x 10 x 2.5 cm / 7.1 x 3.9 x 1 in

Strap drop: 48 cm / 18.9 in

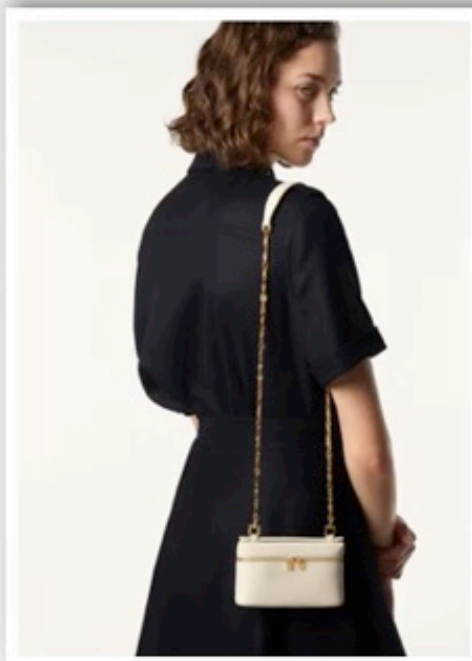
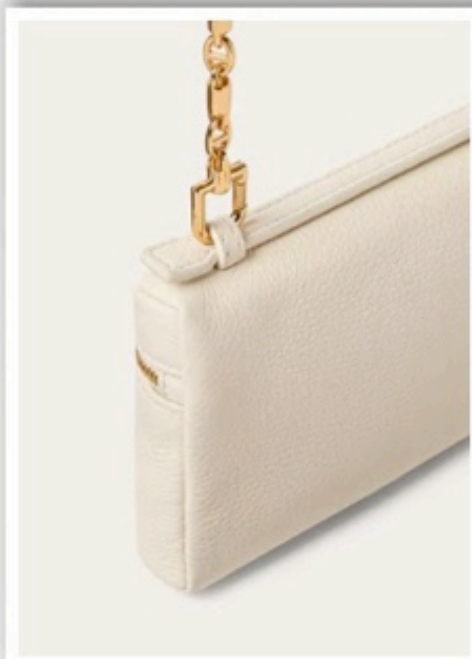
Composition: 100% Calfskin

Lining: 100% Lambskin

Made in Italy

Extra Pochette Calfskin

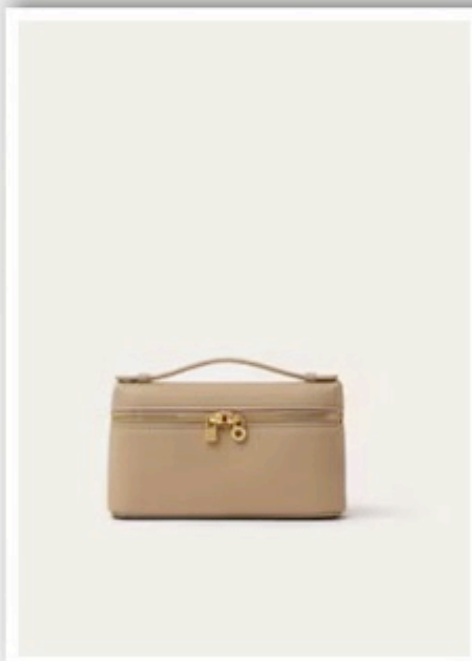
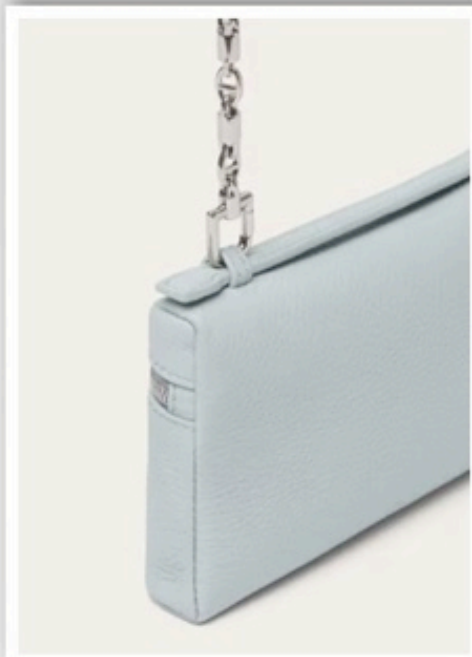
115,000



Removable leather  
wrist strap  
Fastens with a two  
way zip featuring My  
Charms  
Dimensions: 9x15x3  
cm  
Composition: 100%  
Calfskin  
Lining: 100%  
Lambskin  
Made in Italy

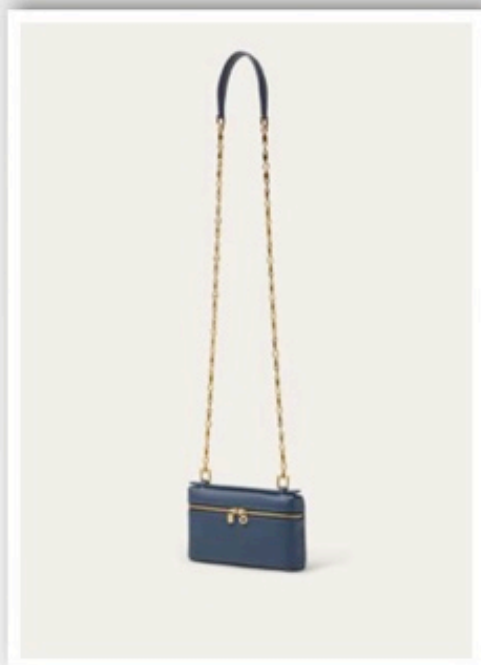
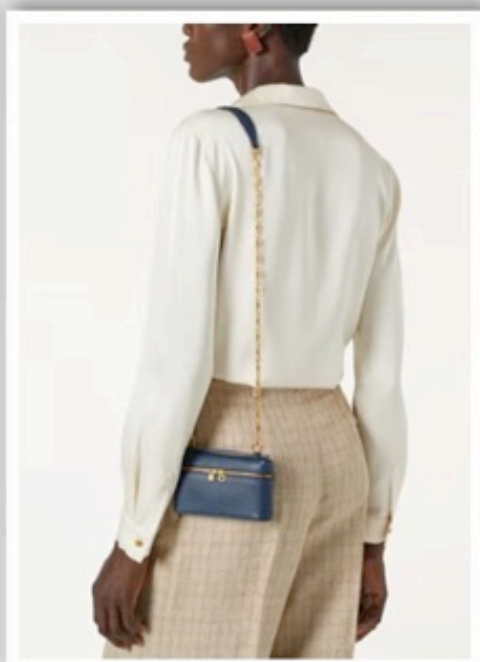
Extra Pocket Mini Pouch Grained Calfskin  
159,000.





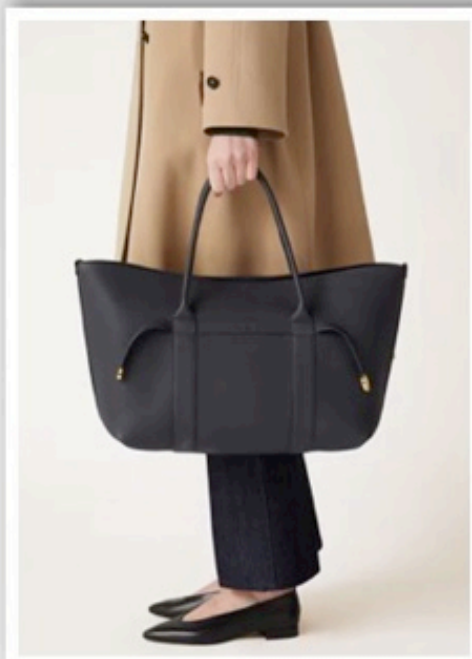
Removable leather  
wrist strap  
Fastens with a two  
way zip featuring My  
Charms  
Dimensions: 9x15x3  
cm  
Composition: 100%  
Calfskin  
Lining: 100%  
Lambskin  
Made in Italy

Extra Pocket Mini Pouch Grained Calfskin  
159,000



Removable leather  
wrist strap  
Fastens with a two  
way zip featuring My  
Charms  
Dimensions: 9x15x3  
cm  
Composition: 100%  
Calfskin  
Lining: 100%  
Lambskin  
Made in Italy

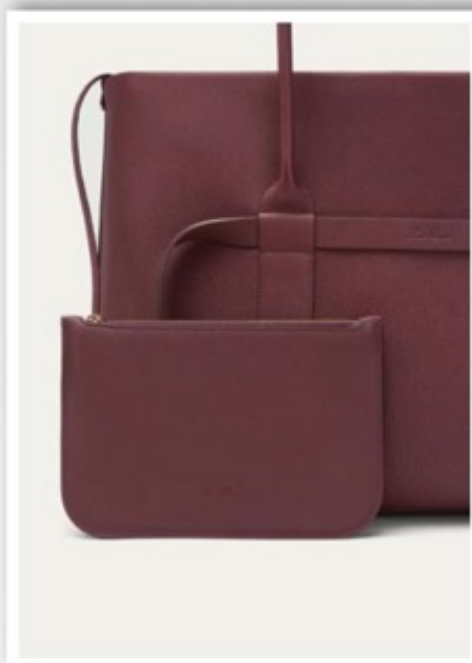
Extra Pocket Mini Pouch Grained Calfskin  
159,000



Leather handles  
Leather lining  
Detachable inner pouch  
Decorative clasp  
Sun Gold metalware finish  
Embossed logo on central leather strap  
Leather lining  
Dimensions: 40 x 26 x 18 cm / 15.7 x 10.2 x 7.1 in  
Handle drop: 16 cm / 6.3 in  
Composition: 100% Calfskin  
Lining: 100% Cashmere  
Made in Italy

Ghiera Shopper Large Calfskin

239,000

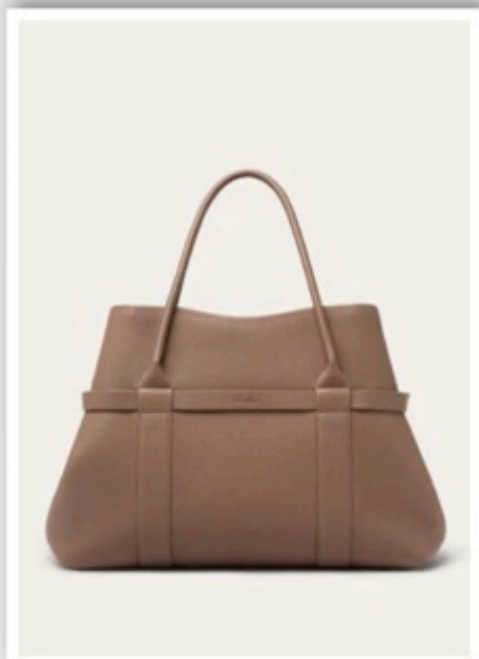


Leather handles  
Leather lining  
Detachable inner pouch  
Decorative clasp  
Sun Gold metalware finish  
Embossed logo on central leather strap  
Leather lining  
Dimensions: 40 x 26 x 18 cm / 15.7 x 10.2 x 7.1 in  
Handle drop: 16 cm / 6.3 in  
Composition: 100% Calfskin  
Lining: 100% Cashmere  
Made in Italy

Ghiera Shopper Large Calfskin

239,000

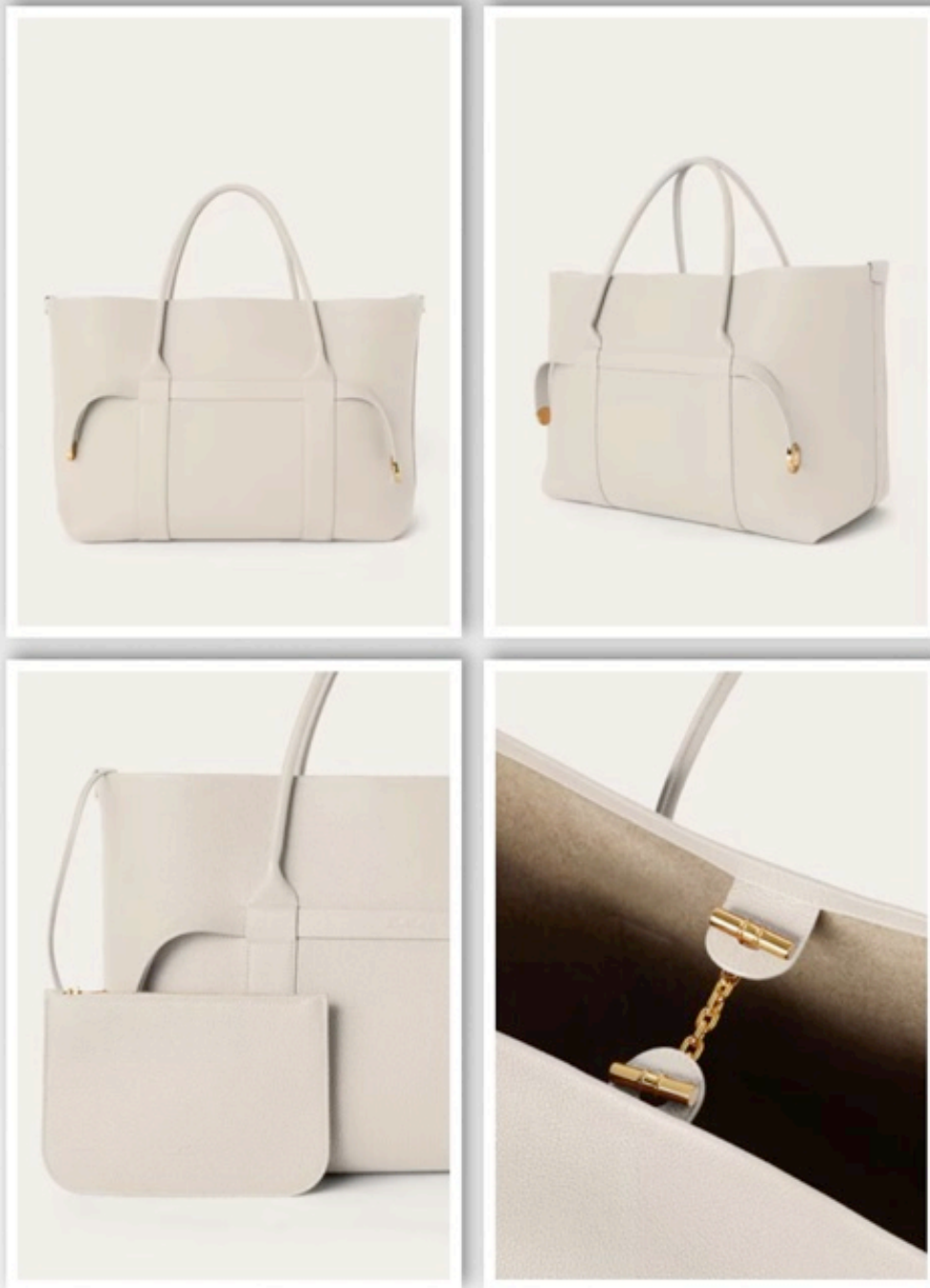




Leather handles  
Leather lining  
Detachable inner pouch  
Decorative clasp  
Sun Gold metalware finish  
Embossed logo on central leather strap  
Leather lining  
Dimensions: 40 x 26 x 18 cm / 15.7 x 10.2 x 7.1 in  
Handle drop: 16 cm / 6.3 in  
Composition: 100% Calfskin  
Lining: 100% Cashmere  
Made in Italy

Ghiera Shopper Large Calfskin

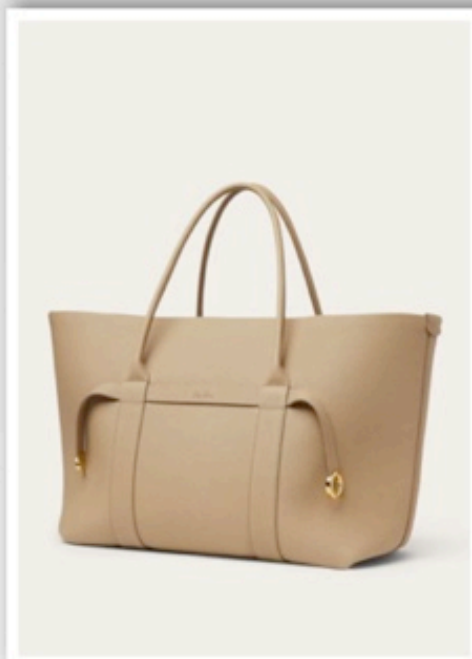
239,000



Leather handles  
Leather lining  
Detachable inner  
pouch  
Decorative clasp  
Sun Gold metalware  
finish  
Embossed logo on  
central leather strap  
Leather lining  
Dimensions: 40 x 26  
x 18 cm / 15.7 x  
10.2 x 7.1 in  
Handle drop: 16 cm  
/ 6.3 in  
Composition: 100%  
Calfskin  
Lining: 100%  
Cashmere  
Made in Italy

Ghiera Shopper Large Calfskin

239,000



Leather handles  
Leather lining  
Detachable inner pouch  
Decorative clasp  
Sun Gold metalware finish  
Embossed logo on central leather strap  
Leather lining  
Dimensions: 40 x 26 x 18 cm / 15.7 x 10.2 x 7.1 in  
Handle drop: 16 cm / 6.3 in  
Composition: 100% Calfskin  
Lining: 100% Cashmere  
Made in Italy

Ghiera Shopper Large Calfskin

239,000