



EMPIRE MACHINERY cmpx⁺2022

REGISTER FOR **FREE** BY SCANNING THIS
QR CODE



BOOTH #731
MAR. 23, 24 & 25, 2022
METRO TORONTO CONVENTION CENTRE, TORONTO, ON



PRICES IN EFFECT TIL APRIL 30, 2022

cmpx 2022 SHOW SPECIALS

EM-PRO 5FT X 10FT DUAL SIDE DRIVE PLASMA CUTTING TABLE



On-Site Installation & Training **INCLUDED!**

ONLY \$49,995
OR \$846/MONTH

POWERED BY:



- ▶ MODEL: 510
- ▶ 5FT x 10FT CUTTING AREA
- ▶ 1000 IPM RAPID TRAVERSE SPEED
- ▶ POSITIONAL ACCURACY OF 0.0005"
- ▶ HEAVY DUTY 3 AXIS RACK & PINION DRIVE SYSTEM
- ▶ REQUIRES 220 VAC, 1 PHASE INPUT POWER TO THE CUTTING MACHINE
- ▶ TABLE IS MADE UP OF 3" x 3" WELDED STEEL TUBING AND 10GA SIDE PANELS
- ▶ THE ENDS OF THE TABLE ARE HINGED DOORS TO ALLOW FOR EASY SCRAP REMOVAL WITHOUT HAVING TO REMOVE ANY SLATS
- ▶ THE TABLE IS DELIVERED COMPLETELY ASSEMBLED FOR SIMPLE & EFFICIENT INSTALLATION

EM-PRO EMT-7R POWER ROTARY (SWAGING) MACHINE

EMT-7R



- ▶ MODEL: EMT-7R
 - ▶ CAPACITY: 14GA
 - ▶ 11" THROAT
 - ▶ INCLUDES 3/8" SINGLE BEAD ROLLS
- STARTING AT \$8,650

- OPTIONAL ROLLS
- ▶ BEAD ROLLS (3/16", 1/4" & 1/2")
 - ▶ BEAD & CRIMP COMBINATION ROLLS
 - ▶ LIGHT & HEAVY CRIMP GAUGE ROLLS
 - ▶ BURRING ROLLS
 - ▶ EASY EDGER ROLLS
 - ▶ ELBOW EDGE ROLLS
 - ▶ FLANGE ROLLS (1/4" & 1/2")
 - ▶ FLATTENING ROLLS
 - ▶ OFFSET ROLLS
 - ▶ OGEE BEAD ROLLS
 - ▶ SLITTING ROLLS
 - ▶ SPIN-IN COLLAR ROLLS
 - ▶ TAP-IN OR STARTER COLLAR ROLLS

- 4 TOP SHAFT CONTROL OPTIONS
1. HAND CRANK
 2. AIR CYLINDER
 3. AIR OVER OIL HYDRAULIC CYLINDER
 4. DIGITAL PROGRAMMABLE TOP SHAFT

SHOWN WITH OPTIONAL BASE STAND

FREE FREIGHT APPLIES TO CONTINENTAL CANADA ONLY.

IPI PRO-DUCTOMATIC FRONT-END COIL LINE

EVERY IPI PRO-DUCTOMATIC FRONT-END COIL LINE SYSTEM HAS BEEN DESIGNED TO MAXIMIZE YOUR RETURN ON INVESTMENT BY DELIVERING YEARS OF RELIABLE PRODUCTION. DESIGNED FOR LIGHT TO HEAVY DUTY COMMERCIAL APPLICATIONS.

- ▶ E-Z LOAD COIL DRUM ASSEMBLIES FOR QUICK COIL CHANGEOVER (NO LIFTING DEVICES TO ADD TO YOUR LIFT TRUCK).
- ▶ SOFT START MOTORS FOR LONG LIFE.
- ▶ HYDRAULICALLY POWERED GEAR DRIVEN DECOILER SYSTEM ON EACH COIL STATION WITH LOW FRICTION UHMW SHAFT POCKETS AVAILABLE IN BOTH 12,000 & 20,000 LB CAPACITIES
- ▶ MULTI-GRID SKATE ROLL SYSTEM FOR SUPPORT OF EVERY COIL STATION.

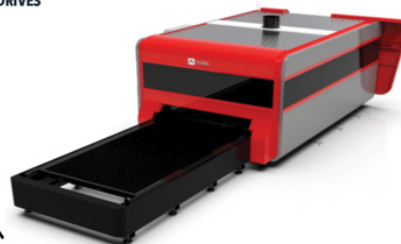
CALL US FOR PRICING!



ALPHA LAZER PRIME SERIES

- ▶ CONSTRUCTION ALLOWS FOR EXTREMELY RAPID ACCELERATION AND DECELERATION
- ▶ AUTOMATIC DUAL PALETTE TABLE CHANGER
- ▶ COMPACT DESIGN REQUIRES LESS FLOOR SPACE
- ▶ IPG PHOTONICS® HIGH POWER LASER SOURCE FROM 1kW TO 15kW
- ▶ HYPCUT CNC CONTROL SYSTEM
- ▶ STATE-OF-THE-ART YASKAWA® DRIVES
- ▶ CHILLER
- ▶ DUST COLLECTOR
- ▶ ATLANTA® RACK & PINION

STARTING AT: \$299,995



SPIRAL HELIX 3600 SPIRAL PIPE MACHINE (MODULAR EDITION)

- ▶ DIAMETER: 3" - 64"
- ▶ STRIP THICKNESS: 0.016" - 0.051" GALVANIZED STEEL
- ▶ 0.016" - 0.024" STAINLESS STEEL
- ▶ 0.016" - 0.051" ALUMINIUM
- ▶ PERFORMANCE TESTED GUARANTEED (BASED ON DUCT OF 3M LENGTH)
- ▶ 0.020" THICKNESS - 4" DIAMETER - 180 DUCTS/HOUR
- ▶ 0.028" THICKNESS - 20" DIAMETER - 53 DUCTS/HOUR
- ▶ 0.035" THICKNESS - 50" DIAMETER - 23 DUCTS/HOUR
- ▶ AUTOMATIC LENGTH MEASUREMENT SYSTEM
- ▶ LARGE STATE-OF-THE-ART TOUCH SCREEN PANEL WITH SUPERIOR USER INTERFACE
- ▶ CUTTING SYSTEM: SMOOTH AND NOISELESS CUT WITH HYDRAULIC SLITTER MODEL H
- ▶ PC DOWNLOAD FUNCTION PREPARED - SPIRO CONNECT

4" - 20" FORMING PACKAGE STARTING AT \$140,000 USD



PRO MODEL IS SHOWN



SPIRAL HELIX GORELOCKER

The high production Gorelocker produces standing lockseam elbows and reducers. The standing seam reduces welding to just one longitudinal seam and improves rigidity.

- ▶ Diameter Range: 5" - 50"
- ▶ Capacity: 18GA Mild Steel
- ▶ Flanging Speed: 120 m/min
- ▶ Dual working stations - Flanging station and seam closing station can be in operation at the same time

ONLY \$72,995 USD



SPIRAL HELIX STITCHWELDER PRO 2.0

ONLY \$95,695 USD
OR \$1,841 USD/MONTH

- ▶ Diameter Range: 3" - 39"
- ▶ Welding Length: 2.36" - 40"
- ▶ 50" and 60" boom length
- ▶ Sheet Thickness: .012 - .040" available
- ▶ Overlap: 1/4"
- ▶ Variable Welding Speed: 16 to 40 feet/min.
- ▶ Wire Diameter: .078"



EM-PRO SPOTWELDERS **FREE FREIGHT** until end of April

25KVA - FOOT OPERATED

- ▶ MODEL: PB126S1
 - ▶ EASY TO USE DIAL CONTROL
 - ▶ ELECTRICS: 220V/575V 1PH 60Hz
- ONLY \$6,695

25KVA - AIR OPERATED

- ▶ MODEL: PBP126S2
 - ▶ EASY TO USE DIAL CONTROL
 - ▶ ELECTRICS: 220V/575V 1PH 60Hz
- ONLY \$6,935

25KVA - AIR OPERATED

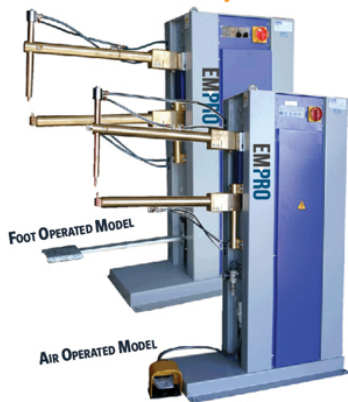
- ▶ MODEL: PBP126PX
 - ▶ EASY TO USE DIGITAL CONTROL
 - ▶ ELECTRICS: 220V/575V 1PH 60Hz
- ONLY \$7,275

35KVA - AIR OPERATED

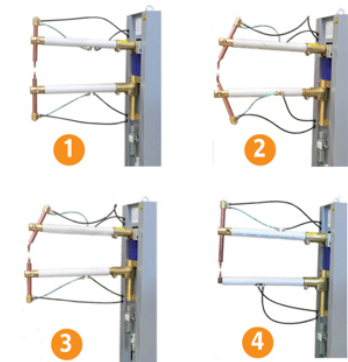
- ▶ MODEL: PBP136PX
 - ▶ EASY TO USE DIGITAL CONTROL
 - ▶ ELECTRICS: 220V/440V 1PH 60Hz
- ONLY \$7,910

50KVA - AIR OPERATED

- ▶ MODEL: PBP151PX
 - ▶ EASY TO USE DIGITAL CONTROL
 - ▶ ELECTRICS: 220V/440V 1PH 60Hz
- ONLY \$9,420



OPTIONAL:
SELF CONTAINED WATER CHILLER (KEEPS TRANSFORMER ARMS & TIPS AT OPTIMUM OPERATING TEMPERATURE)
\$1,435



TIP HOLDER CONFIGURATIONS

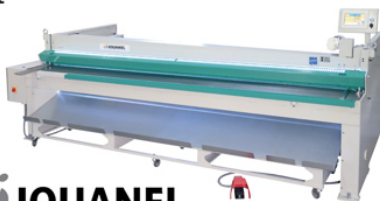
- ▶ FOUR (4) TIP HOLDER CONFIGURATIONS AVAILABLE TO CHOOSE FROM.
- ▶ TIP HOLDER CONFIGURATION #4 IS TO WELD SMALL DIAMETER PARTS AS SHOWN. (WELD TUBES AS SMALL AS 3" DIAMETER)

JOUANEL ELECTRO-MECHANICAL SHEAR

FRONT SUPPORT EASILY PULLS OUT WHEN CUTTING LARGER MATERIAL AND RETRACTS WHEN NOT REQUIRED. REAR MECHANICAL SHEET SUPPORT SYSTEM ALLOWS THE OPERATOR TO UTILIZE THE FULL RANGE OF THE BACKGAUGE WHEN CUTTING THINNER MATERIAL

ONLY \$49,995

- ▶ SHEAR LENGTH: 121.5"
- ▶ CAPACITY: 16GA MILD STEEL
- ▶ BACK GAUGE TRAVEL: .750" - 29.5"
- ▶ MOTOR: 3 HP (2.2 Kw)
- ▶ ELECTRICS: 220V 3PH 60Hz
- ▶ COLOUR TOUCH SCREEN CONTROL
- ▶ SPEED: 25 STROKES PER MINUTE



EM-PRO 4FT X 12GA HEAVY DUTY BOX & PAN BRAKE

ALSO AVAILABLE IN V-812-6 MODEL \$13,995

ONLY \$9,995

- ▶ MODEL V-412-6
- ▶ CAPACITY:
 - MILD STEEL: 12GA
 - STAINLESS STEEL: 16GA
- ▶ BENDING LENGTH: 48"
- ▶ BENDING ANGLE 0-135°
- ▶ MIN. REVERSE BEND: 1/2"
- ▶ BOX DEPTH: 6"



NORLOK SURELOK III CLINCHING MACHINE

NO MORE SPOTWELDING!

- ▶ MODEL: SURELOK-III
- ▶ 25" THROAT
- ▶ FASTEN UP TO 2 LAYERS OF 14GA MILD STEEL (2 LAYERS OF 18GA STAINLESS STEEL WITH SIMPLE TOOLING CHANGE)
- ▶ ADJUSTABLE 2-1/2" STROKE FOR GREATER ACCESS
- ▶ ADVANCED POWER UNIT
- ▶ 64% LESS AIR CONSUMED THAN SURELOK II
- ▶ WHISPER QUIET!

ONLY \$23,340
MADE IN CANADA
LESS 10% OFF

OTHER MODELS ALSO AVAILABLE!



NORLOK SURELOK II HIGH SPEED CLINCHING MACHINE

ONLY \$24,648
MADE IN CANADA

SURELOK II 12 24v HS FEATURES AN ELECTRONIC OPTION (THAT CAN BE TURNED ON OR OFF) TO INCREASE THE SPEED OF THE MACHINE WHILE MAINTAINING NORLOK'S TRUSTED SAFETY FEATURES.

- ▶ 1" ADJUSTABLE STROKE
- ▶ 12" THROAT FRAME CLINCHES FROM 32 GA TO 14 GA MILD STEEL
- ▶ INTELLIGENT SAFETY STROKE NOW WITH ADJUSTABLE "ANTI FATIGUE" 400MS TO 3SEC AUTO CYCLE
- ▶ FASTEST OSHA SAFE CLINCHING IN THE WORLD - 2.5 CLINCHES PER SECOND



GRIPNAIL HIGH SPEED PINSPOTTER

ONLY \$19,995

- ▶ MODEL: 7005HS (HIGH SPEED)
- ▶ CAPACITY: 16-26 GA
- ▶ THROAT DEPTH: 63"
- ▶ UP TO 2" PINS
- ▶ AIR REQUIREMENT: 2-3 CFM, 80 PSI
- ▶ 220V 1PH (30 AMP)
- ▶ SHIPPING DIMENSIONS: 90" x 41" x 70"
- ▶ RAPID FIRE FEATURE FOR FITTINGS



JOUANEL CNC FOLDER

ONLY \$107,995

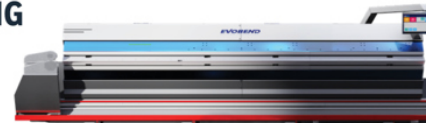
- ▶ FOLDING LENGTH: 122"
- ▶ CAPACITY: 16 GA MILD STEEL
- ▶ TABLE HEIGHT: 32.6
- ▶ CLAMPING BEAM TOOL ANGLE: 20 DEGREES
- ▶ CLAMP OPENING: 5.11"
- ▶ BACK GAUGE TRAVEL: 0.314" - 39.5"
- ▶ BACK GAUGE SPEED: 700 IPM FORWARD / 1180 BACKWARD
- ▶ DIMENSIONS: 168" x 70" x 65"
- ▶ ELECTRICS: 230V 3PH 60Hz
- ▶ MOTOR: 1.5 HP
- ▶ SAFETY LIGHTS
- ▶ CROWNING IN FOLDING BEAM



EVOBEND D300 LONG FOLDER

- ▶ BENDING LENGTH: 125"
- ▶ NUMBER OF LEGS: 4
- ▶ MAX. CAPACITY MILD STEEL: 14 GA (2 MM)
- ▶ MAX. CAPACITY ALUMINUM: 1/8 IN (3 MM)
- ▶ MAX. CAPACITY STAINLESS STEEL: 18 GA (1.25 MM)
- ▶ DIMENSIONS: 4600MM L x 1880MM W x 1875MM H

STARTING AT: \$315,000 USD



PRICES IN EFFECT TIL APRIL 30, 2022



EMPIRE MACHINERY & TOOLS LTD. | 390 EAGLE DR. WINNIPEG, MB R3C 2E6
TOLL FREE: 1.800.665.8089 | PHONE: 204.779.7791 | FAX: 204.779.7796

WWW.EMPIRE-MACHINERY.COM | SALES@EMPIRE-MACHINERY.COM



CMPX TRADESHOW FLYER

EM-PRO 10GA POWER ROTARY MACHINE

- ▶ MODEL IBKS 4.0
- ▶ CAPACITY: 10GA
- ▶ 8" THROAT
- ▶ INCLUDES 3 SETS OF ROLLS: BEAD, OFFSET, FLATTENING
- ▶ HIGH/LOW SPEED CONTROL
- ▶ ELECTRICS: 220V 1PH 60Hz



HYDRAULIC TOP SHAFT CONTROL INCLUDED!



ONLY \$14,995
OR \$357/MONTH

EM-PRO DUCT BEADER

- ▶ 5 BEAD ROLLS INDIVIDUALLY ADJUSTABLE ALONG SHAFT
- ▶ ADJUSTABLE BEAD DEPTH UP TO 3/16" DEEP
- ▶ SPEED: 65FT/MIN APPROX.
- ▶ ELECTRICS: 115V/230V 1 PH
- ▶ DIMENSIONS: 80" L x 43" W x 34" H

Model: 516

- ▶ CAPACITY: 5FT 16GA
- ▶ MOTOR: 1.5HP
- ▶ WEIGHT: 1,500 LBS

Only \$9,995

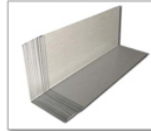


EM-PRO EZESTEP FLASHING BENDER

MAKE YOUR OWN STEP FLASHING!

- ▶ EASILY MAKE 1000 OR MORE PEICES OF STEP FLASHING PER HOUR
- ▶ 93 DEGREE ANGLE EVERY TIME MEANS STEP FITS SNUG AGAINST WALL
- ▶ PARTS COUNTER FOR ACCURATE PEICE COUNTS

Only \$2,495



EM-PRO HYDRAULIC 52" SHEARS

- ▶ MODEL: H-5214
 - ▶ CAPACITY: 52" 14GA MILD STEEL
 - ▶ INCLUDES MANUAL 24" RACK & PINION BACK GAUGE
 - ▶ ELECTRICS: 220V/575V 3PH 60Hz; 3HP
- ONLY \$13,995

- ▶ MODEL: H-5210
 - ▶ CAPACITY: 52" 10GA MILD STEEL
 - ▶ INCLUDES MANUAL 24" RACK & PINION BACK GAUGE
 - ▶ ELECTRICS: 220V 3PH 60Hz; 5HP
- ONLY \$17,995

EM-PRO MANUAL SLIP ROLLERS

- ▶ MODEL: R-3622
 - ▶ CAPACITY: 36" 22GA
 - ▶ ROLL DIAMETER: 2"
- ONLY \$1,395

- ▶ MODEL: R-5016
 - ▶ CAPACITY: 50" 16GA
 - ▶ ROLL DIAMETER: 3"
- ONLY \$2,995

INCLUDES FLOOR STAND



220V 1PH 60Hz; 5HP
ONLY \$18,995

EM-PRO POWERED SLIP ROLLERS

- ▶ MODEL: R-3622E
 - ▶ FORMING WIDTH: 36"
 - ▶ CAPACITY: 22GA
 - ▶ ROLL DIAMETER: 2"
 - ▶ WIRE GROOVES: 3
 - ▶ DRIVEN ROLLS: 2
- ONLY \$4,395

- ▶ MODEL: R-5016E
 - ▶ FORMING WIDTH: 50"
 - ▶ CAPACITY: 16GA
 - ▶ ROLL DIAMETER: 3"
 - ▶ WIRE GROOVES: 3
 - ▶ DRIVEN ROLLS: 2
- ONLY \$5,695

- ▶ GEAR DRIVEN ROLLS
- ▶ MANUAL PINCH & BACK ROLL ADJUSTMENT
- ▶ POLISHED AND GROUND ROLLS MADE OF HIGH CARBON STEEL
- ▶ ELECTRICS: 220V 3PH 60Hz; 1HP



MODEL R-5016E IS SHOWN

PEXTO 24GA MANUAL ROTARY MACHINE

- ▶ MODEL: 622
- ▶ CAPACITY: 24GA
- ▶ 7" THROAT
- ▶ INCLUDES - BENCH BASE
- 5 SETS OF ROLLS: 1/8" TURNING, BURRING, WIRING, SINGLE BEAD & CRIMPING

ONLY \$1,960



EM-PRO INITIAL PINCH BENDING ROLLERS

- ▶ MODEL: R-0520H
 - ▶ CAPACITY: 5FT 14GA
 - ▶ ROLL DIAMETER: 3.74"
 - ▶ ROLL SPEED: 8.5 FPM
 - ▶ ELECTRICS: 575V 3PH 60Hz; 2HP
- ONLY \$19,995

- ROLL LENGTH: 61"
- STANDARD HYDRAULIC POWERED BACKROLL ADJUST



CONE ATTACHMENT INCLUDED

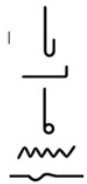
- ▶ MODEL: R-0535H
 - ▶ CAPACITY: 5FT 10GA
 - ▶ ROLL DIAMETER: 4.72"
 - ▶ ROLL SPEED: 8.5 FPM
 - ▶ ELECTRICS: 220V/575V 3PH 60Hz; 2HP
- ONLY \$25,995

- ▶ MODEL: R-0570H
 - ▶ CAPACITY: 5FT 1/4"
 - ▶ ROLL DIAMETER: 7.08"
 - ▶ ROLL SPEED: 7.8 FPM
 - ▶ ELECTRICS: 220V 3PH 60Hz; 5HP
- ONLY \$36,995

TIN KNOCKER 24GA MANUAL COMBINATION MACHINE

- ▶ MODEL: 724
- ▶ 7" THROAT, PEDESTAL SAND
- ▶ CAPACITY: 24GA MILD STEEL
- ▶ CLAMP ON BENCH STAND
- ▶ INCLUDES 5 SETS OF ROLLS: BURRING, CRIMPING, Ogee BEAD, TURNING AND WIRING

ONLY \$1,595



GARDNER BULLY MANUAL SWAGING ROTARY MACHINE

- ▶ MAXIMUM THICKNESS OF MATERIAL PROCESSED: 0.030"
- ▶ MAXIMUM CRIMP WIDTH: 1-1/2"
- ▶ BEAD DIAMETER OUTSIDE, LARGE BEAD: 1/4"
- ▶ BEAD DIAMETER OUTSIDE, SMALL BEAD: 1/8"
- ▶ MAXIMUM DISTANCE FROM BEAD CENTER TO EDGE: 1 1/2"
- ▶ TOTAL WEIGHT OF MACHINE: 16 LBS
- ▶ THICKNESS RANGE OF BENCH TOP FOR MOUNTING: 3/4" TO 3-1/2"

ONLY \$2,595



PRICES IN EFFECT TIL APRIL 30, 2022



EMPIRE MACHINERY & TOOLS LTD. | 390 EAGLE DR. WINNIPEG, MB R3C 2E6
TOLL FREE: 1.800.665.8089 | PHONE: 204.779.7791 | FAX: 204.779.7796

WWW.EMPIRE-MACHINERY.COM | SALES@EMPIRE-MACHINERY.COM



EM-PRO HYDRAULIC BOX & PAN BRAKES

- ▶ **MODEL: VH-1010-6**
- ▶ CONTROLLABLE BEND ANGLE WITH AUTOMATIC RETURN
- ▶ HYDRAULIC CLAMPING
- ▶ ADJUSTABLE BEAM FOR VARYING METAL THICKNESSES
- ▶ ASSORTED FINGER SIZES – 6" BOX DEPTH
- ▶ 220V/440V/575V, 3PH, 60Hz
- ▶ HYDRAULIC OIL INCLUDED
- ▶ BEAM ADJUSTMENT: 1"
- ▶ INCLUDES FRONT & REAR SAFETY LIGHTS

ONLY \$44,495



EM-PRO 55 TON HYDRAULIC IRONWORKER

1 LEFT!
ONLY \$17,995

- ▶ **MODEL: I-55T**
- ▶ PUNCH: 55 TONS
- ▶ THROAT DEPTH: 8"
- ▶ FLAT BAR SHEAR CUTTING LENGTH: 15-1/2" BLADE (5/8" x 15")
- ▶ ANGLE SHEAR: 5" x 5" x 3/8"
- ▶ COPER NOTCHER: 2-3/4" x 4" x 1/4"
- ▶ ROUND AND SQUARE BAR SHEAR ROUND (MIN. TO MAX.): 1/4" - 1-1/2" SQUARE (MIN. TO MAX.): 1/2" - 1"
- ▶ BENDING ATTACH: 8" INCLUDED
- ▶ ELECTRICS: 220V/575V 3PH 60Hz



45 TON AND 100 TON MODELS ALSO AVAILABLE

TIN KNOCKER 24GA PITTSBURGH ROLLFORMER

- ▶ CAPACITY: 24-30GA MILD STEEL & LIGHTER
- ▶ DEPTH OF POCKET: 5/16" WITH HAMMER EDGE OF 3/8"
- ▶ FLANGE HEIGHT: 3/16"
- ▶ SPEED: APPROX. 35FPM
- ▶ INCLUDES AUTOGUIDE FLANGING ATTACHMENT AND AUXILIARY DRIVE CLEAT ROLLS
- ▶ MOTOR: 1/2HP, 1700 RPM, 115V 1PH
- ▶ DIMENSIONS: 30"L x 14"W x 20"H
- ▶ SHIPPING WEIGHT: 305LBS

ONLY \$4,995



MARVEL 60 TON HYDRAULIC IRONWORKER

- ▶ **MODEL: MSIW60D**
- ▶ 60 TON CAPACITY
- ▶ 10" THROAT
- ▶ 5 WORK STATIONS
- ▶ HEAVY-DUTY
- ▶ DUAL CYLINDER
- ▶ COMPLETELY INTEGRATED
- ▶ 7-1/2 H.P.
- ▶ SIMULTANEOUS DUAL OPERATION

OTHER MODELS ALSO AVAILABLE!



ONLY \$22,895

Tin Knocker
SHEET METAL WORKING MACHINERY

TIN KNOCKER 20GA PITTSBURGH ROLLFORMER

- ▶ CAPACITY: 20GA & LIGHTER
- ▶ DEPTH OF POCKET: 5/16" WITH
- ▶ FLANGE HEIGHT: 3/16"
- ▶ SPEED: APPROX. 23FPM
- ▶ INCLUDES AUTOGUIDE FLANGING ATTACHMENT AND AUXILIARY DRIVE CLEAT ROLLS
- ▶ MOTOR: 1HP, 1800 RPM, 115V 1PH
- ▶ DIMENSIONS: 40"L x 24"W x 44"H
- ▶ SHIPPING WEIGHT: 360LBS

ONLY \$8,195



JOUANEL BOX & PAN MANUAL FOLDING MACHINE

- ▶ MAX CAPACITY – MILD STEEL .059, ALUMINUM .078, STAINLESS .039
- ▶ BENDING LENGTH: 50"
- ▶ CLAMP OPENING: 3.93"
- ▶ MAXIMUM ANGLE: 150 DEGREES
- ▶ MACHINE DIMENSIONS: 63" x 35"
- ▶ WEIGHT: 915LBS

ONLY \$9,995



JOUANEL
Machine Tools

TIN KNOCKER FLOOR MODEL BRAKES



ONLY \$10,595

- ▶ **MODEL: TK-1016**
- ▶ CAPACITY: 10' x 16 GA
- ▶ BEND LENGTH: 10' 1"
- ▶ MAXIMUM LIFT ON BEAM: 2 1/4"
- ▶ MINIMUM REVERSE BEND: 1/4"
- ▶ MINIMUM FLANGE IN CAPACITY MATERIAL: 1"
- ▶ BOLT ON APRON ANGLE: INCLUDED
- ▶ COUNTER WEIGHTS: INCLUDED
- ▶ WEIGHT: 3,000 LBS
- ▶ DIMENSIONS: 160 x 50 x 60 IN

FLAGLER HI-SPEED BUTTON LOCK

- ▶ CAPACITY: 20GA-30GA
- ▶ SIZE: 1/2" POCKET
- ▶ FORMING SPEED: APPROX. 100FPM
- ▶ ELECTRICS: 220V 3PH 60Hz; 5HP
- ▶ DIMENSIONS: 68"L x 24"W x 42"H
- ▶ APPROX. SHIPPING WEIGHT: 1000 LBS

Only \$19,995



flagler

FLAGLER ELECTRIC 36" X 20GA CLEATBENDER

- ▶ **MODEL: HYC-36**
- ▶ MAX. CAPACITY: 20 GA MILD STEEL
- ▶ BENDING LENGTH: 36"
- ▶ OPEN THROAT DESIGN
- ▶ LARGE FEED AND SIDE TABLES
- ▶ BACK GAUGE HAS ARMOUR PLATED STEEL INSERTS
- ▶ HARDENED BENDING BAR
- ▶ SPEED: 2 SECONDS CYCLE TIME
- ▶ ELECTRICS: 220V 3PH 60Hz

ONLY \$21,995



flagler

TIN KNOCKER 22GA BARFOLDER

ONLY \$4,895

- ▶ **MODEL: TK30**
- ▶ CAPACITY: 22GA
- ▶ MAX. BEND LENGTH: 30"
- ▶ FLANGE WIDTH RANGE: 1/8"-1"
- ▶ DIMENSIONS: 48" x 20" x 13"
- ▶ SHIPPING WEIGHT: 334 LBS.



CONTACT EMPIRE REGARDING TRADE-INS, OR TO BUY OR SELL YOUR USED EQUIPMENT ON CONSIGNMENT!

PRICES IN EFFECT TIL APRIL 30, 2022



EMPIRE MACHINERY & TOOLS LTD. | 390 EAGLE DR. WINNIPEG, MB R3C 2E6
TOLL FREE: 1.800.665.8089 | PHONE: 204.779.7791 | FAX: 204.779.7796

WWW.EMPIRE-MACHINERY.COM | SALES@EMPIRE-MACHINERY.COM

