

# Overhead Line Construction



## Table of Contents

<b>Product</b>	<b>Code</b>	<b>Page</b>
ABC Straight Line Roller	OLC1	4
Cross Arm Roller With Nylon Uplift Roller	861	4
Cross Arm Mounted Roller	OLC6	4
Cross Arm mounted Angle Roller	OLC7	4
Fibre Optic Cable Stringing Roller	90325	5
Insulator Mounted Roller	OLC9	5
Insulator Mounted Angle Roller	OLC10	5
Pulley Block For Fibre Installation	M1L	6
Pulley Block For Fibre Installation with Guy Wire Clamp	M1	6
Conductor Running Out Block	OLC8	7
Conductor Lifter	OLC13	7
Cross Arm Lifter	OLC11	7
Transformer Lifter	OLC12	8
Pole Bogie	28	8
Sheerlegs	29	8
Hastings Fibreglass Pole Turner	132	9
Chain Type Pole Twister	131	9
Stihl Wood Pole Turner	134	9
Stihl Metal Pole Turner	133	9
Pole Pikes	30	10
Pole Platform	31	10
Swivel Pole Platform	32	10
Stay Wire Dispencer	90303	11
Adjustable Staywire Dispencer	65200668	11
Ground Anchor	65200618	11
Horizontal Ground Anchor	D-804	11
Power Pack	65200617	12
Duck Bill Anchor Rod Driving Kit	DBR	12
Pole Mounted Conductor Winch	OLC20	13
ABC Stringing Winch	OLC18	13
Overheadline Stringing Winch 3000kg	OLC19	13
1400kg Cable Drum Trailer	26	14
EEC Cable Drum Trailer	27	14
Triple Cable Drum Trailer	33	14

## Table of Contents

<b>Product</b>	<b>Code</b>	<b>Page</b>
ABC Straight Line Roller	OLC1	4
Cross Arm Roller With Nylon Uplift Roller	861	4
Cross Arm Mounted Roller	OLC6	4
Cross Arm mounted Angle Roller	OLC7	4
Fibre Optic Cable Stringing Roller	90325	5
Insulator Mounted Roller	OLC9	5
Insulator Mounted Angle Roller	OLC10	5
Pulley Block For Fibre Installation	M1L	6
Pulley Block For Fibre Installation with Guy Wire Clamp	M1	6
Conductor Running Out Block	OLC8	7
Conductor Lifter	OLC13	7
Cross Arm Lifter	OLC11	7
Transformer Lifter	OLC12	8
Pole Bogie	28	8
Sheerlegs	29	8
Hastings Fibreglass Pole Turner	132	9
Chain Type Pole Twister	131	9
Stihl Wood Pole Turner	134	9
Stihl Metal Pole Turner	133	9
Pole Pikes	30	10
Pole Platform	31	10
Swivel Pole Platform	32	10
Stay Wire Dispencer	90303	11
Adjustable Staywire Dispencer	65200668	11
Ground Anchor	65200618	11
Horizontal Ground Anchor	D-804	11
Power Pack	65200617	12
Duck Bill Anchor Rod Driving Kit	DBR	12
Pole Mounted Conductor Winch	OLC20	13
ABC Stringing Winch	OLC18	13
Overheadline Stringing Winch 3000kg	OLC19	13
1400kg Cable Drum Trailer	26	14
EEC Cable Drum Trailer	27	14
Triple Cable Drum Trailer	33	14



## ABC Straight Line Roller

Suspended from pole hook for straight line runs.

Part No	SWL	Weight
---------	-----	--------

## Cross Arm Roller With Nylon Uplift Roller

Suitable for mounting onto cross arms up to 150mm ,with nylon conductor-retaining uplift roller

Part No	SWL	Weight	Roller Width
OL861	300kg	4kg	55mm



## Cross Arm Mounted Roller Latched uplift pin to secure the conductor in the roller



Part No	SWL	Weight
OLC6	350kg	3.2kg

## Cross Arm mounted Angle Roller

Steel galvanised frame, with twin alloy sheaves

Part No	SWL	Weight
OLC7	350kg	4.5kg



## Fibre Optic Cable Stringing Roller

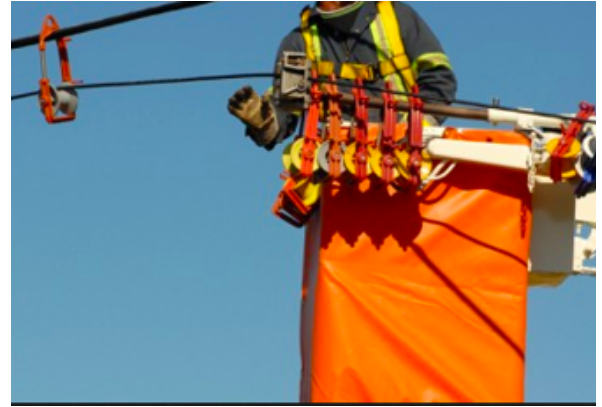
Cable block that simplifies the installation of cables of all varieties. Invented over 15 years ago these ingenious cable blocks reduce the time required when installing additional cables in the network. Made from durable polycarbonate, cable blocks that are built to last. The bright colors make them easy to see and the front spring-loaded door eases the installation with existing cables



Max Cable Width 64mm

SWL 181Kg

Weight : 0.82kg



## Insulator Mounted Roller

Specifically designed for re conducting operations, allows the conductor to be brought in at final installation height. All sagging adjustments etc. can be carried out whilst the conductor is still on the rollers.

Part No	SWL	Weight
OLC9	300kg	3kg



## Insulator Mounted Angle Roller

Specifically designed for re conducting operations. All sagging adjustments etc. can be carried out whilst the conductor is still on the rollers. When adjustments are complete the locking pins are opened and the roller removed, leaving the conductor in its correct position on the insulator

Part No	SWL	Weight
OLC10	300kg	6kg





## Pulley Block For Fibre Installation

- Lightweight
- High visibility
- UV resistant
- Robust and virtually unbreakable
- High rigidity due to closed frame
- Installation in all orientations
- Handle for handling and manual installation
- Ring and hooks for installation with installation pole
- Jamming area for holding the position on the carrier cable
- Optional safety pin for critical application available
- Spare parts offered



**Pulley Block For Fibre Installation  
with Guy Wire Clamp**



## Conductor Running Out Block

Single pulley block ideal for the running out of conductors and the tensioning of conductors.

The molded aluminium alloy sheave, with interchangeable nylon protection sleeves, is mounted on ball race suspension for smooth running.

Swivel hook attachment is standard.

Part No	Outer Sheave Dia	Sheave Width	SWL
OLC7-1	300mm	38mm	1200kg
OLC7-2	440mm	48mm	1500kg
OLC7-3	770mm	68mm	2000kg
OLC7-4	920mm	38mm	2000kg



## Conductor Lifter

This appliance has been specially devised to facilitate the replacement of old or damaged insulators.

The unit fixes directly onto the X-Arm.

A built in ratchet puller allows the conductor to be lifted effortlessly clear of the insulator and then lowered back into place.

Fully galvanised high quality steel.

Max Lift :540mm



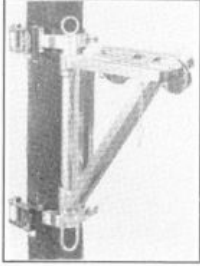
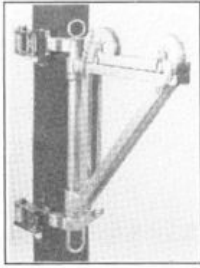
Part No	SWL	Weight
OLC13	250kg	9kg

## Cross Arm Lifter

Lightweight cross arm lifter

Part No	SWL	Weight
OLC11	300kg	6kg





## Transformer Lifter

Transformer lifting gin is manufactured from high quality box section galvanised steel and is ideally suited to be used with either a vehicle mounted or hand operated winch. The gin features lifting eyes at the top and bottom to facilitate installation and dismantlement. The gin is quickly tightened to the pole using webbing ratchet straps. The top section is hinged to allow installation of the winch bond, and the swinging arm of the gin can rotate through 180 degrees to position a transformer in the excav position required. The gin has a WLL of 1000kg and the roller sheaves will accommodate a wire rope up to a maximum diameter of 12mm.

**Part No**  
OLC12

**SWL**  
1200kg

**Weight**  
18kg

## Pole Bogie

This pole bogie is fitted with low-pressure tyres to reduce land damage to a minimum. Ideally suited for transporting poles across rough terrain or soft ground. The poles are secured with quick action retaining straps. Also available is the towing eye and strap for towing by vehicles, and narrow versions for when restricted access is required.

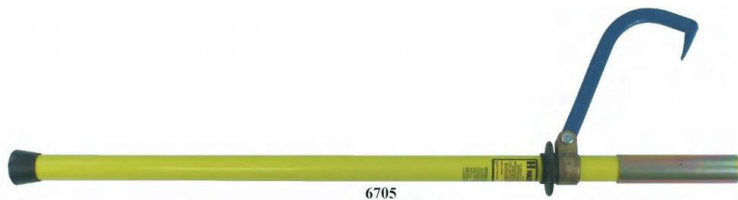


## Sheerlegs

Designed to raise wood poles used in the construction of overhead Power and telecom lines.

Integral Hand winch for raising pole lifting collar.





## Hastings Fibreglass Pole Turner

- High strength forged steel hook
- 1 3/4" diameter fiberglass handle is easily gripped when wearing gloves
- Supplied with heavy duty base cap to protect butt end
- Protective metal sleeve on head eliminates wear
- Knuckle guard to protect hand if hook swings back to pole



## Chain Type Pole Twister

With telescopic steel handle,  
with 1m. length of 7mm.  
Kuplex chain,  
0.95m. closed. 1.35m extended



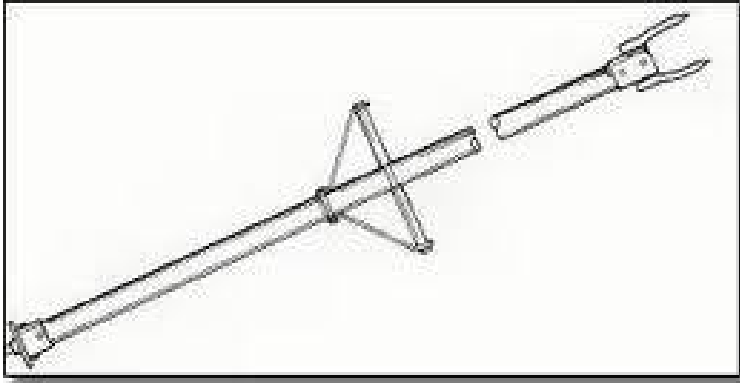
## Stihl Wood Pole Turner

For turning poles, particularly suitable for big timber.  
Serrated mount for sharp bite into the wood.  
Conical sleeve, hand-forged hook and ash handle.  
Weight: 3.6kg



## Stihl Metal Pole Turner

Stihl felling lever with cant hook. 130cm



## Pole Pikes

Wooden poles can be safely erected with two men deploying these lightweight pole pikes. Manufactured in aluminium tube with double pole spikes, push up handle and ground spike. Usually supplied in pairs

### SPECIFICATION

Length:	2m	3m	4m	5m	6m
Weight	8kg	9kg	11kg	14kg	16.5kg
:					

## Pole Platform

- Lightweight aluminium design 10kg
- 'Anti-slip' surface
- 'Quick clamp' ratchet strap pole attachment system
- Wide step surface for increased safety and comfort
- Compact design for ease of Handling and transportation
- Test Certificate supplied
- SWL 150Kg

Part No	Length	Width	Weight
OLC31	900mm	300mm	6.8kg
OLC32	1200mm	300mm	8.5kg

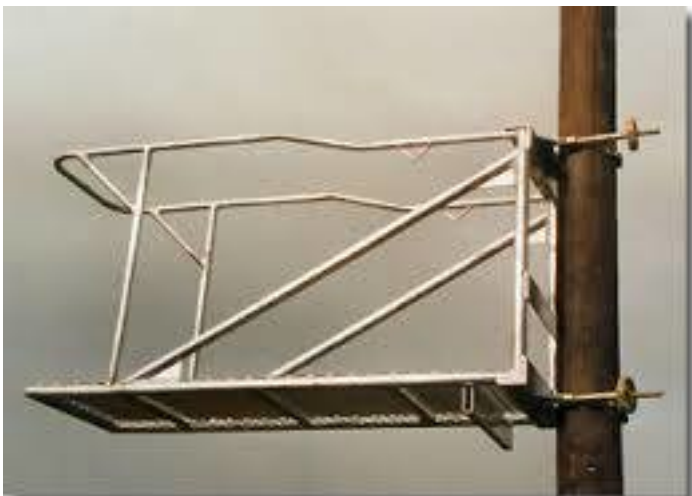


## Swivel Pole Platform

Platform allows the operator to swivel the base through + or - 70 degrees, simply by releasing the control pin, swiveling the platform and replacing the locking pin in the position required.

Designed with an anti slip base to safely carry one person and equipment with a maximum weight of 150kg.

Length	Width	Rail Height	Weight
1600mm	350mm	950mm	33kg



## Stay Wire Dispencer

An essential aid for handling staywire coils,  
Robustly constructed in steel tube having a plated finish.

Removable side arm for ease of loading,  
automatically feeds wire as drawn off by operator.



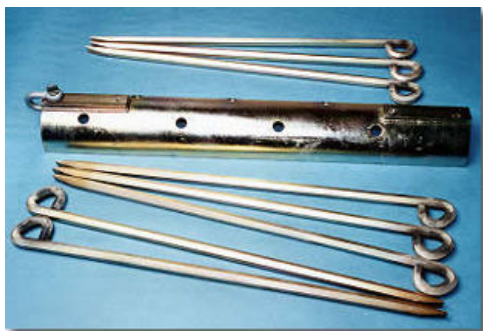
## Adjustable Staywire Dispencer



Adjustable Stay Wire Dispencer to provide an easy and safe means to unwind and rewind stay wire. Extremely rugged and all-weather heavy-duty. Made of steel and zinc coated to ensure long life, it has four adjustable arms that allow an easy and secure means of loading, unwinding and rewinding various coils with different diameters. Coils can be simply rolled into the stand and clamped into place with the adjustable arms. Wire is easily pulled or rewound through "smooth" center guides. Universal Mounting Feature can be installed on a floor or wall. To Take Coil Diameter Range from 559mm to 897mm

## Ground Anchor

The screw type ground anchor provides secure anchorage points when operating on site  
Manufactured in high quality steel to provide safe and firm location points when pulling and holding.



## Horizontal Ground Anchor

A sturdy ground anchor designed for use where near horizontal loads are being applied  
Fixed by the insertion of an eight-pins.  
3000kg SWL.

## Power Pack

This powerpack is powerful and robust but still lightweight

- Honda GX240 6 kW (8 hp) petrol engine
- Optional Lombardini 15LD 5 kW (6.8 hp) diesel engine, with optional electric start
- Weight 66 kg (83 kg with diesel or 92 kg with diesel/electric start)
- 20 l/min max hydraulic flow
- Unique suction circuit eliminates pulsation damage to cooler
- Lift up handle makes portability second to none
- Power-on-demand system reduces off-load engine to idle for reduced noise levels, less engine wear and low fuel consumption
- Swing open frame provides excellent maintenance access to engine and hydraulics
- Integral hose track prevents damage to hoses
- Adjustable hydraulic flow gives precision control of tools



## Duck Bill Anchor Rod Driving Kit

A complete set of Duckbill Anchor Drive Rods, consisting

- 1 x R32 Female Rod 900mm
- 2 x R32 M/F Rod 900mm
- 1 x 32mm Hex Shank End 350mm
- Canvas storage bag,







## Pole Mounted Conductor Winch

The latest descendant in our range of pole mounted winches,

The drive unit has a built in dead man's handle, meaning instant stop should the handle be released.

The capstan operation gives a constant output thus giving better control.

The winch is supplied in kit format to aid transportation

Drums (split or rope) are supplied separately,

## ABC Stringing Winch

This particular winch is designed for use on both Overhead Lines and Underground Cables.

A very compact and lightweight trailer winch the 210 has a dynamometer which allows us to set the pulling force at 850kg which can be adjusted upto 1,000kg for specific occasions. A split drum for re-conductoring work or 8mm x 500m paracore rope and rope drums for new construction are available seperately.



## Overheadline Stringing Winch 3000kg

This machine has proven reliability, due mainly to its excellent design & manufacture. The engineered robustness allows use in almost any environment.

The machine can be used for either new construction or refurbishment works, with the use of rope drums or split drums respectively.







## 1400kg Cable Drum Trailer

Simple to use, maintain and manoeuvre and now fitted with our strongest stringing brake yet, this cable drum trailer or cable reel trailer is ideal for use on either overhead line or underground cable installations.

The drum is raised and lowered by using the hand winch which is geared so as to reduce operator fatigue and has a load holding brake for safety.

The rear prop legs are used to ensure total stability when the trailer is in use.

## EEC Cable Drum Trailer

1550Kg Payload EEC Cable Drum Trailer illustrated here with optional Drum Brake, Light Guards and Number Plate Holder

Cable Drum Weight 1550Kg

Cable Drum Max Diameter 2150mm

Cable Drum Min Diameter 750mm

Cable Drum Width 1400mm



## Triple Cable Drum Trailer

Flat bed Triple Drum Trailer built to customer specification.

Each drum is mounted on a turntable and is fitted with a mechanical disc brake.

