

BROTHERS PRINTER CATALOG 2025



WIST

Contact Us

customerservice@wist.com



Brother Document Imaging and Labeling

Solutions For Business

www.brother.com | ©2025 Brother International Corporation

brother
at your side



The Brother Workhorse Series includes a wide portfolio of printers that range from robust, high-volume printers for enterprise and mid to large-sized workgroups, to compact printers that are ideal for small offices.

Color Laser Printers

Enterprise / Mid to Large-sized Workgroups



Brother HL-L9470CDN



HL-L9430CDN

Up to **42ppm**¹
3.5" touchscreen display
2,700 sheets max. paper capacity²



HL-L9470CDN

KEY FEATURES

- › 520-sheet capacity paper tray²
- › Gigabit Ethernet networking
- › Includes 9,000-page black / 6,500-page color toner cartridges³
- › 15,000-page black / 12,000-page color replacement toner cartridges (TN815 series)³
- › Recommended monthly print volume up to 12,000 pages⁴

All the features of the HL-L9430CDN, plus:

- › High-speed duplex printing (up to 42ppm simplex and duplex)
- › Dual band (2.4GHz / 5GHz) wireless networking
- › Recommended monthly print volume up to 15,000 pages⁴



PRINTER SHOWN WITH OPTIONAL TOWER TRAY, CONNECTOR, AND STAPLER FINISHER

Optional paper trays can be added as following:

- › 250-sheet capacity (up to 3), 500-sheet capacity (up to 2), Tower Tray (4 x 520-sheet)²





Color Laser All-in-Ones

Enterprise / Mid to Large-sized Workgroups



MFC-L9630CDN

Up to **42ppm¹**
7" touchscreen display
100 page capacity ADF²
2,700 sheets max. paper capacity²



MFC-L9670CDN

KEY FEATURES

- › 520-sheet capacity paper tray²
- › Scan speeds up to 52ipm simplex / 104ipm duplex⁵
- › Gigabit Ethernet networking
- › Includes 9,000-page black / 6,500-page color toner cartridges³
- › 15,000-page black / 12,000-page color replacement toner cartridges (TN815 series)³
- › Recommended monthly print volume up to 12,000 pages⁴

All the features of the MFC-L9630CDN, plus:

- › High-speed duplex printing (up to 42ppm simplex and duplex)
- › Dual band (2.4GHz / 5GHz) wireless networking
- › Recommended monthly print volume up to 15,000 pages⁴



ALL-IN-ONE SHOWN WITH OPTIONAL TOWER TRAY AND CONNECTOR

Optional paper trays can be added as following:

- › 250-sheet capacity (up to 3), 500-sheet capacity (up to 2), Tower Tray (4 x 520-sheet)²

REPLACEMENT SUPPLIES & OPTIONAL ACCESSORIES

- TN810BK Standard Yield Black Toner Cartridge (9,000 pages)³
- TN810C/M/Y Series Standard Yield Color Toner Cartridges (6,500 pages each)³
- TN810XLBK High Yield Black Toner Cartridge (12,000 pages)³
- TN810XLC/M/Y Series High Yield Color Toner Cartridges (9,000 pages each)³
- TN815BK Super High Yield Black Toner Cartridge (15,000 pages)³
- TN815C/M/Y Series Super High Yield Color Toner Cartridges (12,000 pages each)³
- DR810CL Drum Unit (100,000 pages)⁶
- LT-330CL Optional 250-Sheet Capacity Paper Tray²
- LT-340CL Optional 500-Sheet Capacity Paper Tray²
- TT-4000 Optional Tower Tray with Stabilizer (520-sheet capacity x 4 trays)²
- TC-4100 Optional Tower Tray Connector (required for TT-4000)
- SF-4000 Optional Stapler Finisher (HL-L9430CDN and HL-L9470CDN only) SR-100 Replacement Staple Cartridge (10,000 staples)
- MX-4000 Optional 4-Bin Mailbox / Sorter / Stacker (HL-L9430CDN and HL-L9470CDN only)
- CB-1010 Optional 15.7" Printer Cabinet / Stand
- CH-1000 Optional Card Reader Holder
- NC-9000W Optional Dual Band Wireless Module (HL-L9430CDN and MFC-L9630CDN only)



Color Laser Printer and All-in-One

Small to Medium-sized Businesses / Small to Mid-sized Workgroups



HL-L9310cdw

Up to **33ppm**¹
2.7" touchscreen display
2,380 sheets max. paper capacity²



MFC-L9570cdw

KEY FEATURES

- › Gigabit Ethernet and wireless networking
- › 250-sheet capacity paper tray²
- › Includes 6,500-page toner cartridges³
- › 9,000-page replacement toner cartridges (TN439 series)³
- › Recommended monthly print volume up to 6,000 pages⁴

All the features of the HL-L9310cdw, plus:

- › Scan, Copy, Fax
- › Scan speeds up to 52ipm simplex / 104ipm duplex⁵
- › 80-page capacity ADF²
- › 7" touchscreen display



HL-L9310cdw
PLUS TOWER TRAY WITH
CONNECTOR OPTIONS



MFC-L9570cdw
PLUS TOWER TRAY WITH
CONNECTOR OPTIONS

Optional paper trays can be added as following:

- › 250-sheet capacity (up to 3), 500-sheet capacity (up to 2), Tower Tray (4 x 520-sheet)²

REPLACEMENT SUPPLIES & OPTIONAL ACCESSORIES

- TN436 Series Super High Yield Toner Cartridges (6,500 pages each)³
- TN439 Series Ultra High Yield Toner Cartridges (9,000 pages each)³
- DR433CL Drum Unit (50,000 pages)⁷
- LT-330CL Optional 250-Sheet Capacity Lower Paper Tray²
- LT-340CL Optional 500-Sheet Capacity Lower Paper Tray²
- TT-4000 Optional Tower Tray with Stabilizer (520-sheet capacity x 4 trays)²
- TC-4100 Optional Tower Tray Connector (required for TT-4000)
- CB-1010 Optional 15.7" Printer Cabinet / Stand
- CH-1000 Optional Card Reader Holder



Monochrome Laser Printers and All-in-Ones

Enterprise / Mid to Large-sized Workgroups



HL-L6415dw

Up to **52ppm**¹
3.5" touchscreen display
2,700 sheets max. paper capacity²



HL-L6415dwt

KEY FEATURES

- › Gigabit Ethernet and dual band (2.4GHz / 5GHz) wireless networking
- › 520-sheet capacity paper tray²
- › Includes 11,000-page toner cartridge⁸
- › 25,000-page replacement toner cartridge (TN925)⁸
- › Recommended monthly print volume up to 16,000 pages⁴

All the features of the HL-L6415dw, plus:

- › Second 520-sheet capacity paper tray²



HL-L6415dw
 PLUS TOWER TRAY AND
 STAPLER FINISHER OPTIONS



MFC-L6915dw

KEY FEATURES

All the features of the HL-L6415dw, plus:

- › Scan, Copy, Fax
- › Scan speeds up to 52ipm simplex (mono) / 104ipm duplex (mono)⁵
- › 7" touchscreen display
- › 80-page capacity ADF²



MFC-L6915dw
 ALL-IN-ONE SHOWN WITH
 TOWER TRAY OPTION



Optional paper trays can be added as following:

- › HL-L6415dw: 250-sheet capacity (up to 3), 520-sheet capacity (up to 2), Tower Tray (4 x 520-sheet)²
- › HL-L6415dwt: 250-sheet or 520-sheet capacity (1 total)²
- › MFC-L6915dw: 250-sheet or 520-sheet capacity (2 total), Tower Tray (4 x 520-sheet)²

REPLACEMENT SUPPLIES & OPTIONAL ACCESSORIES

- TN920 Standard Yield Toner Cartridge (3,000 pages)⁸
- TN920XL High Yield Toner Cartridge (6,000 pages)⁸
- TN920XL 2PK High Yield Toner Cartridge Twin Pack (6,000 pages / Cartridge)⁸
- TN920XXL Super High Yield Toner Cartridge (11,000 pages)⁸
- TN920XXL Ultra High Yield Toner Cartridge (18,000 pages)⁸
- TN925 Max Yield Toner Cartridge (25,000 pages)⁸
- DR925 Drum Unit (75,000 pages)⁹
- LT-5505 Optional 250-Sheet Capacity Paper Tray²
- LT-6505 Optional 520-Sheet Capacity Paper Tray²
- SF-4000 Optional Stapler Finisher (HL-L6415dw and HL-L6415dwt only)
- SR-100 Replacement Staple Cartridge (10,000 staples)
- MX-4000 Optional 4-Bin Mailbox / Sorter / Stackers (HL-L6415dw and HL-L6415dwt only)
- TT-4000 Optional Tower Tray with Stabilizer (520-sheet capacity x 4 trays)² (except HL-L6415dw)
- CB-2000 Optional 15.7" Printer Cabinet / Stand
- CH-1000 Optional Card Reader Holder



Monochrome Laser Printer and All-in-One

Small to Medium-sized Businesses



HL-L5215dw

Up to **48ppm**¹
1,390 sheets max.
paper capacity²



MFC-L5715dw



KEY FEATURES

- › Gigabit Ethernet and dual band (2.4GHz / 5GHz) wireless networking
- › 250-sheet capacity paper tray²
- › Includes 6,000-page toner cartridge⁸
- › 18,000-page replacement toner cartridge (TN920UXXL)⁸
- › Recommended monthly print volume up to 5,000 pages⁴

All the features of the HL-L5215dw, plus:

- › Scan, Copy, Fax
- › Scan speeds up to 30ipm simplex (mono) / 60ipm duplex (mono)⁵
- › 50-page capacity ADF²
- › 3.5" touchscreen display

Optional paper trays can be added as following:

- › 250-sheet or 520-sheet capacity (2 total)²

REPLACEMENT SUPPLIES & OPTIONAL ACCESSORIES

- TN920 Standard Yield Toner Cartridge (3,000 pages)⁸
- TN920XL High Yield Toner Cartridge (6,000 pages)⁸
- TN920XL 2PK High Yield Toner Cartridge Twin Pack (6,000 pages / Cartridge)⁸
- TN920XXL Super High Yield Toner Cartridge (11,000 pages)⁸
- TN920UXXL Ultra High Yield Toner Cartridge (18,000 pages)⁸
- DR925 Drum Unit (75,000 pages)⁹
- LT-5505 Optional 250-Sheet Capacity Paper Tray²
- LT-6505 Optional 520-Sheet Capacity Paper Tray²
- CB-2000 Optional 15.7" Printer Cabinet / Stand



The Brother Workhorse MFC-J5955dw Business Color Inkjet All-in-One Printer offers vibrant, borderless output up to 11"x17" with comparable performance, security features, and operating costs as a business laser printer.

Color Inkjet All-in-One

Small to Medium-sized Businesses



MFC-J5955dw

Up to **30ppm**¹⁰
Up to **11"x17"** printing
3.5" touchscreen display

KEY FEATURES

- › Ethernet and dual band (2.4GHz / 5GHz) wireless networking
- › Dual 250-sheet capacity trays²
- › 50-page capacity ADF²
- › Includes 5,340-page black / 1,950-page color ink cartridges¹¹
- › Low-cost output using 6,000-page black / 5,000-page color replacement ink cartridges (LC406XL series)¹¹
- › Integrated NFC card reader
- › BR-Script3¹² and PCL6 emulations
- › Recommended monthly print volume up to 250 - 3,500 pages⁴

Ideal for multiple verticals:

- › **Retail:** Impactful POS displays and signage, seasonal decorations
- › **Hospitality / Restaurants:** Menus, event invitations, special promotions
- › **Real Estate:** On-demand brochures, open house flyers, property listings
- › **Financial:** Large format financial documents and reports for easier readability
- › **Education:** Classroom materials, posters, newsletters, administrative documents
- › **Construction / Engineering:** Drawings and construction plans



REPLACEMENT SUPPLIES

- LC406BK Standard Yield Black Ink Cartridge (3,000 pages)¹¹
- LC406C/M/Y Series Standard Yield Color Ink Cartridges (1,500 pages each)¹¹
- LC406 3PK 3-Pack of Standard Yield Cyan, Magenta, and Yellow Ink Cartridges (1,500 pages each)¹¹
- LC406XLBK High Yield Black Ink Cartridge (6,000 pages)¹¹
- LC406XLC/M/Y Series High Yield Color Ink Cartridges (5,000 pages each)¹¹



The Brother Workhorse Series now includes models designed to meet the needs of decentralized workforces and are ideal for small offices with lower print volumes. These devices feature a space-saving design.

Compact Digital Color Printer and All-in-One

Small Offices / Small Workgroups



HL-L8245cdw

Up to **31ppm**¹
2.7" touchscreen display
530 sheets max. paper capacity²



MFC-L8395cdw



Brother MFC-L8395CDW

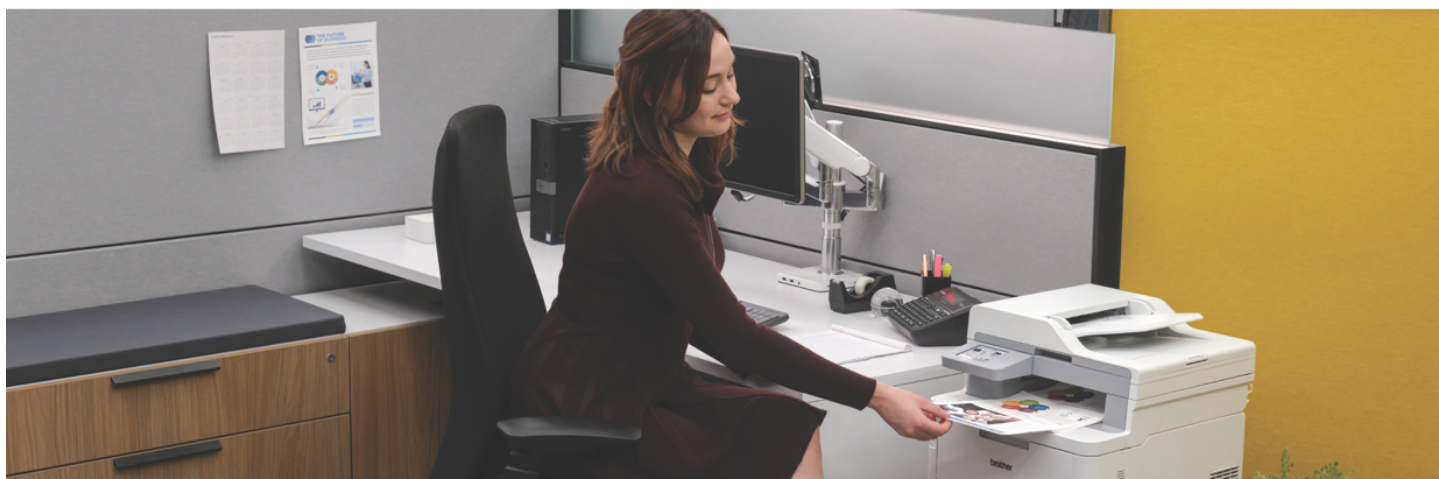


KEY FEATURES

- › Gigabit Ethernet and dual band (2.4GHz / 5GHz) wireless networking
- › 250-sheet capacity paper tray²
- › Cost-efficient output using 4,500-page black / 4,000-page color replacement toner cartridges (TN229XXL series)³
- › Recommended monthly print volume up to 4,000 pages⁴

All the features of the HL-L8245cdw, plus:

- › Scan, Copy, Fax
- › Scan speeds up to 28ipm simplex (mono) / 58ipm duplex (mono)⁵
- › 50-page capacity ADF²
- › 3.5" touchscreen display



REPLACEMENT SUPPLIES & OPTIONAL ACCESSORIES

- TN229BK Standard Yield Black Toner Cartridge (1,500 pages)³
- TN229C/M/Y Series Standard Yield Color Toner Cartridges (1,200 pages each)³
- TN229 4PK 4-Pack of Standard Yield Black, Cyan, Magenta, and Yellow Toner Cartridges (1,500 BK / 1,200 CMY pages)³
- TN229LKBK High Yield Black Toner Cartridge (3,000 pages)³
- TN229XL 2PK High Yield Black Toner Cartridge Twin Pack (3,000 pages / Cartridge)³
- TN229XLC/M/Y Series High Yield Color Toner Cartridges (2,300 pages each)³
- TN229XXLKBK Super High Yield Black Toner Cartridge (4,500 pages)³
- TN229XXLC/M/Y Series Super High Yield Color Toner Cartridges (4,000 pages each)³
- DR229CL Drum Unit (20,000 pages)³
- LT-310CL Optional 250-Sheet Capacity Paper Tray²



Monochrome Laser Printer and All-in-One

Small Offices / Small Workgroups



HL-L2865dw

Up to **36ppm¹**



MFC-L2980dw

KEY FEATURES

- › Ethernet and dual band (2.4GHz / 5GHz) wireless networking
- › 250-sheet capacity paper tray²
- › Cost-efficient output using 5,000-page replacement toner cartridge (TN835)³
- › Includes 1,200-page toner cartridge⁸
- › Mobile device printing¹⁴
- › Recommended monthly print volume up to 2,500 pages⁴

All the features of the HL-L2865dw, plus:

- › Scan, Copy, Fax
- › 50-page capacity ADF²
- › 3.5" touchscreen display
- › Recommended monthly print volume up to 3,500 pages⁴

REPLACEMENT SUPPLIES

- TN830 Standard Yield Toner Cartridge (1,200 pages)⁸
- TN830XL High Yield Toner Cartridge (3,000 pages)⁸
- TN830XL 2PK High Yield Toner Cartridge Twin Pack (3,000 pages / Cartridge)⁸
- TN835 Super High Yield Toner Cartridge (5,000 pages)⁸
- DR830 Drum Unit (15,000 pages)¹⁵

Professional Desktop Scanners

Brother offers desktop scanners to help businesses streamline the process of digitalizing, organizing and sharing documents. These devices offer easy integration with existing business processes, systems, and workflows.



ADS-4300N

Up to **40ipm**¹⁶
simplex scanning

Up to **80ipm**¹⁶
duplex scanning

3-Year limited warranty



ADS-4700W



ADS-4900W



Brother ADS-4700W
Brother ADS-4900W

KEY FEATURES

- › Ethernet networking
- › 80-page capacity ADF²
- › TWAIN, WIA, ISIS, and SANE drivers to seamlessly integrate with existing workflows
- › Included powerful bundled software suite¹⁷
- › Recommended daily scan volume up to 6,000 pages¹⁸

All the features of the ADS-4300N, plus:

- › 4.3" touchscreen display
- › Wireless networking
- › 56 customizable shortcuts
- › Enhanced security features

All the features of the ADS-4700W, plus:

- › Up to 60ipm simplex / 120ipm duplex scanning¹⁶
- › 100-page capacity ADF²
- › Dual band (2.4GHz / 5GHz) wireless networking
- › Recommended daily scan volume up to 9,000 pages¹⁸



REPLACEMENT SUPPLIES & OPTIONAL ACCESSORIES

- PRK-A3001 Replacement Roller Kit (ADS-4300N and ADS-4700W)
- PRK-A4001 Replacement Roller Kit (ADS-4900W)
- CS-A3301 Optional Carrier Sheet (2-pack)

Value Beyond the Box

Meet the demanding needs of the modern office with Brother hardware, software, and service-based solutions, designed to give you a competitive advantage.

Visit brother-usa.com/solutions to learn more.

Value Services

From enhanced collaboration to increased document security, Brother Value Services can help your mid to large-sized organization streamline processes, reduce operational and device running costs, and create efficiencies required for long-term success.

Value Services include:

Secure Print Advanced

Secure print job release solution without the high overhead cost.

Custom User Interface

Modified user interface for business workflows and security policy.

Special Solutions Team

Customized solutions for unique configuration and deployment requirements.

Tungsten ControlSuite (formerly Kofax)

Secure, govern, and manage every aspect of information distribution.

PaperCut MF

Monitor and control copying, printing, and faxing.

SecureRx by TroyRx

Print CMS-compliant prescriptions directly onto plain paper.



Security Services

To help protect against print security threats and maintain compliance, Brother devices are equipped with robust Triple Layer Security features.

DEVICE

Restrict and limit access to the device at the individual, group, and activity level.

DOCUMENT

Protect documents in transit to and from print devices.

NETWORK

Safeguard against outside threats using higher level security protocols.

VPP

Value Print Program

Provides discounts on Genuine Brother toner, ink, and drums for customers who commit to purchase and install select Brother printers and all-in-ones, along with the requisite Brother Genuine Supplies. Includes a limited warranty extension to cover three full years of warranty coverage.

LOW COST PER PAGE (CPP)

With discounts on Brother Genuine Supplies, the Value Print Program helps to drive CPP among the lowest in the industry.

DEVICE UPTIME

Device unification with Brother branded equipment allows for readily available replacement parts. Downtime is virtually eliminated, increasing employee productivity.

CUSTOMER NETWORK SECURITY AND INTEGRITY

With VPP there is no requirement to load third-party software on a network, reducing the need for on-site visits.

Brother Assessment Services

Brother Assessment Services can help customers optimize their print and imaging environment. From predictive analytics to full, on-site infrastructure optimization assessments, our team of experts help customers develop strategies to increase productivity, lower costs, increase security, and reduce their environmental impact.

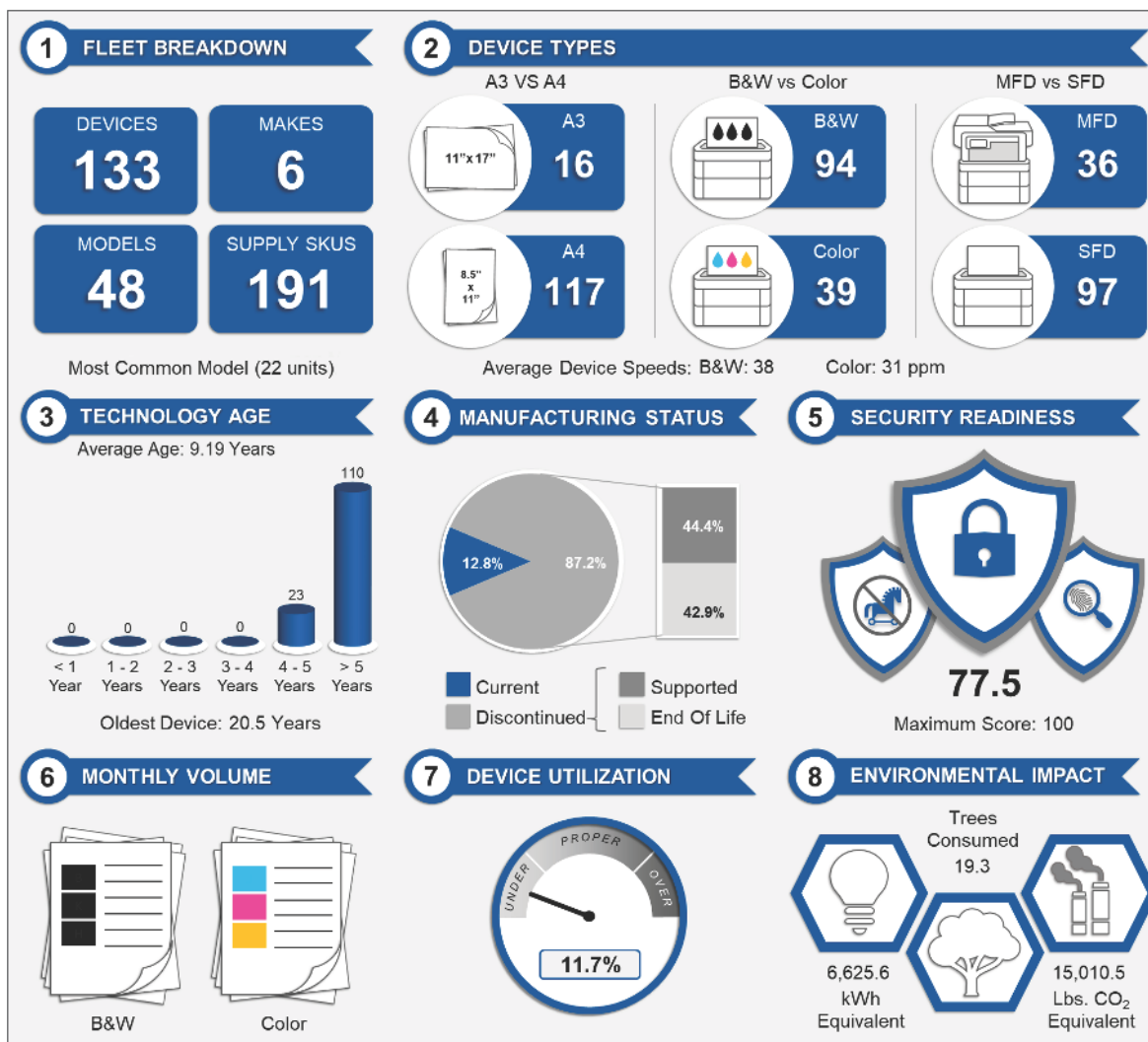
Print Cost Predictive Analysis

Snapshot of a print environment to generate a fleet status and total cost of ownership report.

Infrastructure Optimization Assessment

Audit of select business locations, mapping out devices in a floor plan, and recommending a cost-effective solution.

SAMPLE ASSESSMENT AT-A-GLANCE



Labeling Solutions

Brother offers a wide range of labeling solutions to meet the needs of busy offices, retail stores, warehouses, and more.



QL Professional Label Printers



Up to **93** labels per minute¹⁹

QL-800



Up to **110** labels per minute¹⁹

QL-810W / QL-810Wc

KEY FEATURES

- › Ideal for name badges, retail shelf tags, healthcare patient identification and specimen collection, and product labels
- › USB interface
- › Print black and red labels using DK-2251 roll
- › Easy to integrate with free software development kits (SDK's)

All the features of the QL-800, plus:

- › Wi-Fi® interface
- › Optional Li-ion battery for a complete mobile solution



Up to **110** labels per minute¹⁹

QL-820NWB / QL-820NWBc



Up to **69** labels per minute¹⁹

QL-1100
QL-1110NWB / QL-1110NWBc

KEY FEATURES

All the features of the QL-810W / QL-810Wc, plus:

- › Ethernet and Bluetooth® interfaces
- › Internal date and time
- › USB Host interface for use with a peripheral such as a scanner (USB host only supported with QL-820NWB and QL-1110NWB models)

- › Ideal for large name badges, product and shipping labels
- › Prints on labels up to 4" wide (including shipping postage labels)
- › Automatic crop function to easily print barcode labels from A4 / letter size label sheet templates (Windows only)
- › Ethernet, Wi-Fi®, and Bluetooth® interfaces (QL-1110NWB / QL-1110NWBc)

REPLACEMENT SUPPLIES & OPTIONAL ACCESSORIES

brother-usa.com/supplies/label-tape

Brother Developer Program

Tools, documentation, and resources to build solutions for Brother devices: developerprogram.brother-usa.com.

Mobile Printing Solutions for Documents, Receipts, and Labels

8.5"x11" thermal documents, labels, invoices

Up to **13.5** pages per minute²⁰



PocketJet 8

1" to 2" labels, receipts and tags

Up to **6"** per second²⁰

Up to **300** 1-inch labels per minute¹⁹



RuggedJet 2

1" to 3" labels, receipts and tags

Up to **5"** per second²⁰

Up to **300** 1-inch labels per minute¹⁹



RuggedJet 3200

2" to 4" labels, receipts and tags

Up to **5"** per second²⁰

Up to **300** 1-inch labels per minute¹⁹



RuggedJet 4200

KEY FEATURES

- › Ideal for field service, home healthcare, and mobile or mounted applications
- › Print sharp details up to 300dpi
- › Optional rechargeable Li-ion battery with a yield up to 600 pages on a single charge²⁰
- › Dual Wi-Fi® and Bluetooth® wireless interfaces (USB and Bluetooth® only models available)
- › Ideal for small format, mobile POS receipt and label applications
- › Rugged design tested to withstand drops from up to 6 feet²¹
- › Connects easily with USB 2.0, Wi-Fi®, and Bluetooth® wireless interfaces
- › Ideal for 3" format labels found in retail, manufacturing, etc
- › Choose print resolution: 203 or 300dpi
- › Print all day on a single charge with included smart Li-ion battery²⁰
- › 1 LED control panel
- › NFC for easy pairing and Wi-Fi® and Bluetooth® options
- › Ideal for wearing, carrying or mounting this lightweight ergonomic printer in-vehicle and out
- › IP54 certification for dust and moisture, plus rugged design tested to withstand drops from up to 6 feet²¹
- › Connects easily with USB 2.0, Wi-Fi®, and Bluetooth® wireless interfaces
- › Available with optional AC and DC vehicle adapters, various mounts, and carrying cases for greater mobility

Desktop Label Printing Solutions for Business Professionals



TD-2130N

2" direct thermal

Up to **6"** per second²⁰

Up to **360** 1-inch labels per minute¹⁹



TD-4550DNWB

4" direct thermal

Up to **6"** per second²⁰

Up to **360** 1-inch labels per minute¹⁹



TD-4650DNWB

4" thermal transfer

Up to **6"** per second²⁰

Up to **360** 1-inch labels per minute¹⁹

KEY FEATURES

- › Ideal for food service, healthcare, etc, printing 2" labels, tags and wristbands
- › Space saving, compact footprint
- › Optional accessories to convert to a standalone mobile print station with a touch panel keyboard and rechargeable battery pack
- › Additional models: TD-2020, TD-2120N
- › Ideal for printing high quality direct thermal labels such as shipping labels, receipts, tickets and labels for perishable goods
- › Print accurate scanning barcodes at 203 or 300dpi on a label up to 4.65" wide
- › Integrate with leading WMS systems and directly from within SAP® Printer Vendor program
- › Additional models: TD-4410D, TD-4420DN
- › Prints thermal transfer and direct thermal media up to 4.4" wide
- › Ideal for batch printing shipping labels
- › Multiple connectivity options such as Wi-Fi® and Bluetooth®
- › Additional models: TD-4420TN, TD-4520TN, TD-4750TNWB, TD-4750TNWBcs

REPLACEMENT SUPPLIES & OPTIONAL ACCESSORIES

brothermobilesolutions.com/products/accessories



Titan Industrial Printer Series – 4-inch Thermal Transfer Technology



TJ-4021TN / TJ-4121TN

Up to **10"** per second²⁰
Up to **600** 1-inch labels per minute¹⁹



TJ-4420TN / TJ-4520TN
TJ-4620TN

Up to **14"** per second²⁰
Up to **600** dpi print resolution
Up to **840** 1-inch labels per minute¹⁹



TJ-4422TN / TJ-4522TN

Up to **14"** per second²⁰
Internal rewinder
Up to **840** 1-inch labels per minute¹⁹

KEY FEATURES

- › Continuous performance at a great value
- › Available in 203 or 300dpi for high volume, high quality printing
- › Ethernet interface and optional wireless module

- › Speed, precision and durability for industrial demands
- › Print speeds up to 14ips²⁰ on the TJ-4520TN and up to 600dpi²⁰ print resolution for small fonts, 2D barcodes, and detailed ID labels on the TJ-4620TN model
- › Bright multicolor LCD display with standalone functionality

- › Exceptional speed with enhanced functionality
- › Ultra-fast print speeds up to 14ips²⁰ for high-volume shipping labels
- › Built-in automatic internal rewinder for printing batch product labels to be used as needed

REPLACEMENT SUPPLIES & OPTIONAL ACCESSORIES

brothermobilesolutions.com

- Brother mobile, desktop and industrial printers come with a 2-year Premier Limited Warranty.
- Software development kits available for integration support.

VPP

Value Print Program

brother
at your side

Program Overview

The Brother Value Print Program provides Brother Authorized Partners discounts on Brother Genuine toner, ink, and drums and a limited warranty extension to cover three full years of warranty coverage on select hardware models (listed on back). To qualify for this program, your customer must agree to purchase Brother Genuine supplies for a three-year period.

- If all requirements are met, you will automatically **qualify for discounted pricing on Brother Genuine toner, ink, and drums.**
- If your customer is printing more than **1,500 pages a month** per device, you will qualify for an even deeper discount on Brother Genuine supplies - **for aggressive CPCs!**
- When you have a 20-unit or more opportunity (initial order of 5 units), **think of Brother VPP!**

You have nothing to lose, and so much to gain!

Key Benefits

- Brother Genuine toner discounts (competitive with A3 offerings!) can **help increase your revenue.**
- **Free limited warranty extension** on each select hardware unit to cover three full years of service.
- Helps you gain contractual business with **regular, consistent, revenue supplies stream.**

Here's How to Get Started

Talk to your Brother Channel Account Representative to get approved supplies pricing from your Brother Authorized Distributor.

Great opportunity to build this value into your pricing and help increase your total margin!

VPP

Value Print Program

brother
at your side

Program Requirements

- Ensure your customer agrees to purchase only qualified Brother Genuine supplies for all new Brother printers / all-in-ones placed under this program.
- The Reseller must provide monthly end-user POS / sales-out data for all covered products. The Reseller must provide end-user supporting details regarding estimated print volume.
- The Reseller must have a signed VPP agreement or a documented managed print services relationship with the end user. A copy of the contract or other proof must be provided to Brother upon request.
- Unless otherwise stated in the eligible model list, the quantity to qualify for VPP is a minimum of 20 units of eligible hardware over the three years in the program period. In the event the reseller does not satisfy the 20-unit requirement per VPP opportunity in the three-year program period, Brother reserves the right to discontinue the VPP benefits for that opportunity.
- Requires minimum three-year term on contract.
- Supplies must be drop shipped to the customer.

Qualified Hardware Models

MONOCHROME LASER		COLOR LASER / LED	
ALL-IN-ONES	PRINTERS	ALL-IN-ONES	PRINTERS
MFC-L2750 _{dw}	HL-L2370 _{dw} _L	MFC-L8395 _{cdw}	HL-L8245 _{cdw}
MFC-L2750 _{dw} _L	HL-L2379 _{dw}	MFC-L8610 _{cdw}	HL-L8260 _{cdw}
MFC-L2759 _{dw}	HL-L5210 _{dn}	MFC-L8900 _{cdw}	HL-L8360 _{cdw}
MFC-L5705 _{dw}	HL-L5210 _{dw}	MFC-L8905 _{cdw}	HL-L8360 _{cdw} _t
MFC-L5800 _{dw}	HL-L5210 _{dwt}	MFC-L9570 _{cdw}	HL-L9310 _{cdw}
MFC-L5715	HL-L5215 _{dw}	MFC-L9630 _{cdn}	HL-L9430 _{cdn}
MFC-L6750 _{dw}	HL-L6210 _{dw}	MFC-L9670 _{cdn}	HL-L9470 _{cdn}
MFC-L6810 _{dw}	HL-L6210 _{dwt}	COLOR INKJET	
MFC-L6915 _{dw}	HL-L6310 _{dw}		
DCP-L5600 _{dn}	HL-L6415 _{dw}		
DCP-L5650 _{dn}	HL-L6415 _{dwt}	MFC-J5855 _{dw}	MFC-J6555 _{dw}
		MFC-J5955 _{dw}	MFC-J6955 _{dw}

¹ The Value Print Program is offered in consideration of the full program guidelines. Supplies pricing is available for new hardware purchased under this program and is not intended to be used for an existing install base of Brother hardware. Brother reserves the right to modify or discontinue special pricing in its sole discretion.
² See program requirements listed above.



MANAGED PRINT SIMPLIFIED

The TD SYNnex PRINTSolv managed print platform enables you to proactively assess, monitor, manage, and maintain your customer's entire printing environment and create

incremental hardware, service, and supply revenue streams.

HOW IT WORKS:



Gather

The Data Collection Agent (DCA) transmits device information to PRINTSolv cloud.

Alert

Consumables alerts received and order processed.

Ship

Consumables arrive just in time for replacement.

Contact Our Team TODAY!

customerservice@wist.com.